

OVK Series

Features

- 105°C, 5,000 hours assured
- Ultra low ESR, solid capacitors of SMD type
- RoHS Compliant



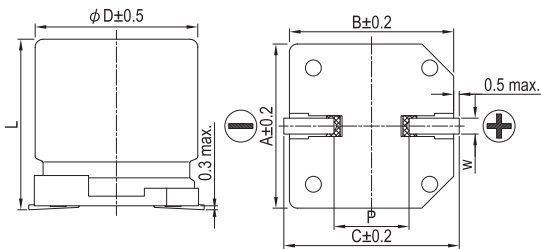
Marking color: Blue

Specifications

Items	Performance										
Category Temperature Range	-55°C ~ +105°C										
Capacitance Tolerance	±20% (at 120 Hz, 20°C)										
Leakage Current (at 20°C)*	Rated voltage applied, after 2 minutes at 20°C. See Standard Ratings										
Tanδ (at 120 Hz, 20°C)	See Standard Ratings										
ESR (at 100k ~ 300k Hz, 20°C)	See Standard Ratings										
Endurance	<table border="1"> <tr><td>Test Time</td><td>5,000 Hrs</td></tr> <tr><td>Capacitance Change</td><td>Within ±20% of initial value</td></tr> <tr><td>Tanδ</td><td>Less than 150% of specified value</td></tr> <tr><td>ESR</td><td>Less than 150% of specified value</td></tr> <tr><td>Leakage Current</td><td>Within specified value</td></tr> </table>	Test Time	5,000 Hrs	Capacitance Change	Within ±20% of initial value	Tanδ	Less than 150% of specified value	ESR	Less than 150% of specified value	Leakage Current	Within specified value
	Test Time	5,000 Hrs									
	Capacitance Change	Within ±20% of initial value									
	Tanδ	Less than 150% of specified value									
	ESR	Less than 150% of specified value									
Leakage Current	Within specified value										
* The above specifications shall be satisfied when the capacitors are restored to 20°C after the rated voltage applied for 5,000 hours at 105°C.											
Moisture Resistance	<table border="1"> <tr><td>Test Time</td><td>1,000 Hrs</td></tr> <tr><td>Capacitance Change</td><td>Within ±20% of initial value</td></tr> <tr><td>Tanδ</td><td>Less than 150% of specified value</td></tr> <tr><td>ESR</td><td>Less than 150% of specified value</td></tr> <tr><td>Leakage Current</td><td>Within specified value</td></tr> </table>	Test Time	1,000 Hrs	Capacitance Change	Within ±20% of initial value	Tanδ	Less than 150% of specified value	ESR	Less than 150% of specified value	Leakage Current	Within specified value
	Test Time	1,000 Hrs									
	Capacitance Change	Within ±20% of initial value									
	Tanδ	Less than 150% of specified value									
	ESR	Less than 150% of specified value									
Leakage Current	Within specified value										
* The above specifications shall be satisfied when the capacitors are restored to 20°C after subjecting them at 60°C, 90 ~ 95% RH for 1,000 hours. Leakage current should be tested after voltage treatment*.											
Resistance to Soldering Heat * (Please refer to page 15 for reflow soldering conditions)	<table border="1"> <tr><td>Capacitance Change</td><td>Within ±10% of initial value</td></tr> <tr><td>Tanδ</td><td>Within specified value</td></tr> <tr><td>ESR</td><td>Within specified value</td></tr> <tr><td>Leakage Current</td><td>Within specified value</td></tr> </table>	Capacitance Change	Within ±10% of initial value	Tanδ	Within specified value	ESR	Within specified value	Leakage Current	Within specified value		
	Capacitance Change	Within ±10% of initial value									
	Tanδ	Within specified value									
	ESR	Within specified value									
Leakage Current	Within specified value										
Ripple Current and Frequency Multipliers	<table border="1"> <tr> <th>Frequency (Hz)</th> <th>120 ≤ f < 1k</th> <th>1k ≤ f < 10k</th> <th>10k ≤ f < 100k</th> <th>100k ≤ f < 500k</th> </tr> <tr> <td>Multiplier</td> <td>0.05</td> <td>0.3</td> <td>0.7</td> <td>1.0</td> </tr> </table>	Frequency (Hz)	120 ≤ f < 1k	1k ≤ f < 10k	10k ≤ f < 100k	100k ≤ f < 500k	Multiplier	0.05	0.3	0.7	1.0
	Frequency (Hz)	120 ≤ f < 1k	1k ≤ f < 10k	10k ≤ f < 100k	100k ≤ f < 500k						
Multiplier	0.05	0.3	0.7	1.0							

* For any doubt about measured values, measure the leakage current again after the following voltage treatment.
Voltage treatment: DC rated voltage is applied to the capacitors for 2 hours at 105 °C.

Diagram of Dimensions



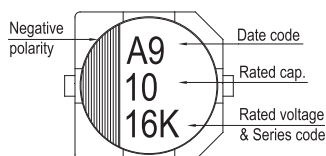
Lead Spacing and Diameter

Unit: mm

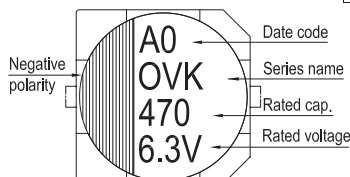
φD	L	A	B	C	W	P ± 0.2
5	5.7 ± 0.3	5.3	5.3	5.9	0.5 ~ 0.8	1.5
6.3	4.4 ± 0.2	6.6	6.6	7.2	0.5 ~ 0.8	2.0
6.3	5.9 +0.1/-0.3	6.6	6.6	7.2	0.5 ~ 0.8	2.0
6.3	7.7 ± 0.3	6.6	6.6	7.2	0.5 ~ 0.8	2.0
6.3	9.5 ± 0.5	6.6	6.6	7.2	0.5 ~ 0.8	2.0
8	6.7 ± 0.3	8.3	8.3	9.0	0.7 ~ 1.1	3.1
8	12.0 ± 0.5	8.3	8.3	9.0	0.7 ~ 1.1	3.1
10	7.7 ± 0.3	10.3	10.3	11.0	0.7 ~ 1.3	4.7
10	9.9 +0.1/-0.3	10.3	10.3	11.0	0.7 ~ 1.3	4.7
10	12.6 +0.1/-0.4	10.3	10.3	11.0	0.7 ~ 1.3	4.7

Marking

φD = 5 ~ 6.3



φD = 8 ~ 10





Dimension: $\phi D \times L$ (mm)
Ripple Current: mA/rms at 100k Hz, 105°C

Standard Ratings

Rated Volt. (V)	Surge Voltage (V)	Capacitance (μ F)	Size $\phi D \times L$ (mm)	Tan δ (120 Hz, 20°C)	L C (μ A)	E S R (m Ω /at 100k ~ 300k Hz, 20°C max.)	Rated R. C. (mA/rms at 100k Hz, 105°C)		
2.5V (0E)	2.9	120	6.3 × 4.4	0.12	120	40	1,670		
		220	6.3 × 5.9		110	25	2,500		
		560	8 × 6.7		280	23	3,100		
		4V (0G)	4.6	680	8 × 12	0.18	340	12	4,770
				1,000	10 × 7.7	0.12	500	19	4,240
				1,200	10 × 9.9	0.18	750	13	5,200
				1,500	10 × 12.6	0.18	750	10	5,500
6.3V (0J)	7.2	68	5 × 5.7	0.12	300	30	1,970		
		100	6.3 × 4.4		160	40	1,670		
		150	5 × 5.7		120	25	2,200		
			6.3 × 5.9		120	22	2,570		
		220	8 × 6.7		176	25	3,020		
		270	8 × 6.7		216	22	3,220		
		330	6.3 × 5.9		264	20	2,800		
			8 × 6.7		264	22	3,220		
		390	6.3 × 7.7		312	14	3,470		
		470	10 × 7.7		375	20	4,130		
		560	8 × 6.7		448	18	3,600		
			8 × 12		448	12	4,770		
		680	10 × 7.7		544	20	4,130		
		820	10 × 9.9		656	13	5,200		
		1,200	10 × 12.6	960	10	5,500			
10V (1A)	12.0	47	5 × 5.7	0.12	300	30	1,970		
		82	6.3 × 4.4		207	40	1,670		
			6.3 × 5.9		103	27	2,400		
		100	5 × 5.7		126	35	1,380		
			6.3 × 5.9		126	22	2,800		
		120	6.3 × 5.9		151	22	2,800		
		150	8 × 6.7		189	25	3,020		
		20	6.3 × 5.9		277	20	2,800		
			8 × 6.7		277	22	3,220		
		270	6.3 × 7.7		340	14	3,470		
		330	6.3 × 7.7		416	14	3,470		
			10 × 7.7		416	20	4,130		
		390	8 × 6.7		491	22	3,220		
		470	8 × 12		592	12	4,770		
			10 × 7.7	592	20	4,130			
560	10 × 9.9	706	16	4,700					
820	10 × 12.6	1,033	10	5,500					
2.5V (0E)	2.9	120	6.3 × 4.4	0.12	120	40	1,670		
		220	6.3 × 5.9		110	25	2,500		
		560	8 × 6.7		280	23	3,100		
		4V (0G)	4.6	680	8 × 12	0.18	340	12	4,770
				1,000	10 × 7.7	0.12	500	19	4,240
				1,200	10 × 9.9	0.18	750	13	5,200
				1,500	10 × 12.6	0.18	750	10	5,500
		6.3V (0J)	7.2	68	5 × 5.7	0.12	300	30	1,970
				100	6.3 × 4.4		160	40	1,670
150	5 × 5.7			120	25		2,200		
	6.3 × 5.9			120	22		2,570		
220	8 × 6.7			176	25		3,020		
270	8 × 6.7			216	22		3,220		
330	6.3 × 5.9			264	20		2,800		
	8 × 6.7			264	22		3,220		
390	6.3 × 7.7			312	14		3,470		
470	10 × 7.7			375	20		4,130		
560	8 × 6.7			448	18		3,600		
	8 × 12			448	12		4,770		
680	10 × 7.7			544	20		4,130		
820	10 × 9.9			656	13		5,200		
1,200	10 × 12.6			960	10	5,500			
10V (1A)	12.0	47	5 × 5.7	0.12	300	30	1,970		
		82	6.3 × 4.4		207	40	1,670		
			6.3 × 5.9		103	27	2,400		
		100	5 × 5.7		126	35	1,380		
			6.3 × 5.9		126	22	2,800		
		120	6.3 × 5.9		151	22	2,800		
		150	8 × 6.7		189	25	3,020		
		20	6.3 × 5.9		277	20	2,800		
			8 × 6.7		277	22	3,220		
		270	6.3 × 7.7		340	14	3,470		
		330	6.3 × 7.7		416	14	3,470		
			10 × 7.7		416	20	4,130		
		390	8 × 6.7		491	22	3,220		
		470	8 × 12		592	12	4,770		
			10 × 7.7	592	20	4,130			
560	10 × 9.9	706	16	4,700					
820	10 × 12.6	1,033	10	5,500					

OP-CAP



Dimension: $\phi D \times L$ (mm)
Ripple Current: mA/rms at 100k Hz, 105°C

Standard Ratings

Rated Volt. (V)	Surge Voltage (V)	Capacitance (μ F)	Size $\phi D \times L$ (mm)	Tan δ (120 Hz, 20°C)	LC (μ A)	E S R (m Ω /at 100k ~ 300k Hz, 20°C max.)	Rated R. C. (mA/rms at 100k Hz, 105°C)
10V (1A)	12.0	270	8 × 6.7	0.12	540	22	3,200
		330	8 × 12	0.15	660	14	4,420
			10 × 7.7	0.12	660	24	3,770
		470	10 × 9.9	0.12	940	18	4,400
16V (1C)	18.0	22	5 × 5.7	0.12	100	45	1,100
		33	6.3 × 4.4		211	40	1,670
		39	5 × 5.7		125	35	2,000
			68		6.3 × 5.9	125	30
		218				24	
		82	6.3 × 7.7		262	28	2,800
			8 × 6.7			30	2,200
		100	6.3 × 5.9		320	24	2,700
			6.3 × 7.7			35	2,670
		10 × 7.7	384		28	2,800	
		120			8 × 6.7	576	29
		180	10 × 7.7		864	11	5,000
		270	6.3 × 9.5		1,056	12	5,300
		330	10 × 12.6				1,504
470	2,624	5,400					
820	3,200	5,400					
1,000							
20V (1D)	23.0	15	6.3 × 4.4	0.12	120	45	2,000
		22	6.3 × 4.4		88	35	2,000
		22	6.3 × 5.9		88	48	1,300
		47	8 × 6.7		188	45	1,890
		56	6.3 × 5.9		224	48	1,300
		68			272		
		82			328		
		100			400		
		120	480		1,080	21	4,000
		270	8 × 12		1,560	14	4,950
		390	8 × 12		1,880	20	4,300
470	10 × 12.6						
25V (1E)	29.0	10	8 × 6.7	0.10	125	60	1,500
		47	6.3 × 5.9	0.12	235	49	1,300
		150	8 × 12		750	28	2,200
		270	10 × 12.6	1,350	27	2,700	
35V (1V)	40.0	18	6.3 × 5.9	0.12	126	64	900
		82	8 × 12		574	29	2,200
		150	10 × 12.6		1,050	28	2,600

Note: The surface temperature of aluminum case top must not exceed 105°C. A rise in temperature due to self-heating by ripple current should be factored in.

Part Numbering System

OVK Series	470 μ F	$\pm 20\%$	6.3V	Carrier Tape	10 ϕ × 7.7L	General Purpose
OVK	471	M	OJ	TR	-	1008
Series Name	Capacitance	Capacitance Tolerance	Rated Voltage	Package Type	Terminal Type	Case Size
						Application

Note: For more details, please refer to "Part Numbering System" on page 20.