



测试报告 Test Report

NO.: BRCYWTJB4030207D3a

第 1 页, 共 44 页 Page 1 of 44

委托单位 Applicant:

立隆电子工业股份有限公司/立隆电子(苏州)有限公司
立隆电子(惠州)有限公司/立隆电子科技(苏州)有限公司
LELON ELECTRONICS CORP./LELON ELECTRONICS(SUZHOU)CO.,LTD/
LELON ELECTRONICS(HUIZHOU)CO.,Ltd./
LELON ELECTRONICS TECHNOLOGY(SUZHOU)CO.,Ltd.

委托单位提供样品信息如下 The following sample(s) was/were submitted and identified on behalf of the client as:

样品名称 Sample Name: 详见下页 Please refer to next page(s)
样品来源 Sample Source: 送样 Send Sample

样品接收日期 Sample Received Date: 2023-11-02
样品测试日期 Test Period: 2023-11-02~2023-11-30

测试要求 Test Requested: RoHS 2011/65/EU 及修订指令(EU)2015/863 附录 II 的要求
RoHS Directive 2011/65/EU & (EU)2015/863 Annex II

测试依据 Test Methods:

- (1) IEC 62321-5 Edition 1.0:2013 的方法, 用原子吸收光谱仪/电感耦合等离子体发射光谱仪测定铅的含量
IEC 62321-5 Edition 1.0:2013 method, Lead Analysis is performed by AAS/ ICP-OES
- (2) IEC 62321-5 Edition 1.0:2013 的方法, 用原子吸收光谱仪/电感耦合等离子体发射光谱仪测定镉的含量
IEC 62321-5 Edition 1.0:2013 method, Cadmium Analysis is performed by AAS/ ICP-OES
- (3) IEC 62321-4:2013+AMD1:2017 CSV 的方法, 用电感耦合等离子体发射光谱仪测定汞的含量
IEC 62321-4:2013+AMD1:2017 CSV method, Mercury Analysis is performed by ICP-OES
- (4) IEC 62321-7-1 Edition 1.0:2015 的方法, 用紫外-可见分光光度计测定六价铬的含量
IEC62321-7-1 Edition 1.0:2015 method, Hexavalent Chromium analysis is performed by UV-Vis
IEC 62321-7-2 Edition 1.0:2017 的方法, 用紫外-可见分光光度计测定六价铬的含量
IEC62321-7-2 Edition 1.0:2017 method, Hexavalent Chromium analysis is performed by UV-Vis
- (5) IEC 62321-6 Edition 1.0:2015 的方法, 用气相色谱质谱联用仪测定多溴联苯和多溴二苯醚的含量
IEC 62321-6 Edition 1.0:2015 method, PBBs and PBDEs Analysis is performed by GC-MS
- (6) IEC 62321-8 Edition 1.0:2017 的方法, 用气相色谱质谱联用仪测定邻苯二甲酸酯类的含量
IEC 62321-8 Edition 1.0:2017 method, Phthalate analysis is performed by GC-MS

测试结果 Test Result: 请参见下页 Please refer to next page(s)

编制 (Edited by):

王莉

王莉

审核 (Checked by):

张艳

张艳

批准 (Approved by):

张强

张强

签发日期 (Issued Date):

2023-11-30

本页以下空白 The page below is blank



声明 Statement

1. 本报告无检验检测专用章、报告骑缝章和批准人签章无效。
This report is invalid without special seal for inspection and test, cross-page seal and signature of the approver.
2. 本报告页面所使用“PONY”、“谱尼”字样为本单位的注册商标, 其受《中华人民共和国商标法》保护, 任何未经本单位授权的擅自使用和仿冒、伪造、变造“PONY”、“谱尼”商标均为违法侵权行为, 本单位将依法追究其法律责任。
The words "PONY" and "谱尼" used in this report page are the registered trademarks of the company, which are protected by the Trademark Law of the People's Republic of China. Any unauthorized use, counterfeiting, forging or altering of the trademarks of "PONY" and "谱尼" without the authorization of the company is an illegal infringement, and the company will investigate their legal liabilities according to law.
3. 委托单位对报告数据如有异议, 请于报告完成之日起十五日内(初级农产品报告请于报告收到之日起五日内)向本单位书面提出复测申请, 同时附上报告原件并预付复测费。
If the applicant has any objection to the report data, please submit a written application for retesting to PONY within 15 days after the completion of the report (for the report of primary agricultural products, submit a written application for retesting to the unit within 5 days after the receipt of the report), with the original report attached and the retesting fee prepaid.
4. 委托单位办理完毕以上手续后, 本单位会尽快安排复测。如果复测结果与异议内容相符, 本单位将退还委托单位的复测费。
After the applicant completes the above procedures, PONY shall arrange the retesting as soon as possible. If the retest result is consistent with the objection, PONY will refund the retest fees.
5. 不可重复性或不能进行复测的实验, 不进行复测, 委托单位放弃异议权利。
If the experiment cannot be repeated or cannot be retested, no retest shall be conducted, and the applicant shall waive the right of objection.
6. 委托单位对送检样品的代表性和资料的真实性负责, 否则本单位不承担任何相关责任。
The applicant is responsible for the representativeness of the commissioned samples and the authenticity of the documents, otherwise PONY does not assume any relevant responsibilities.
7. 本报告仅对所测样品的测试结果负责, 测试数据仅反映对该样品的评价且仅用于委托单位科研、教学或内部质量控制使用, 不具有对社会的证明作用, 对于测试数据的使用、使用所产生的直接或间接损失及一切法律后果, 本单位不承担任何经济和法律责任。
This report is only responsible for the test results of the tested sample. The test data only represents the evaluation of the tested sample and can only be used for scientific research, teaching, or internal quality control by the applicant, does not have proof of social effect. PONY does not assume any economical or legal liability generated from direct or indirect usage of the test report.
8. 本单位有权在完成报告后按规定方式处理所测样品, 除客户特别声明并支付样品管理费, 所有超过标准规定时效期的样品均不再做留样。
PONY has the right to dispose of the tested sample after approval of the test report. Unless the applicant specifically declares and pays the sample management fee, all samples beyond the validity period specified in the standard will not be retained.
9. 本单位保证工作的客观公正性, 对委托单位的商业信息、技术文件等商业秘密履行保密义务。
PONY assures the objectivity and impartiality of the test, and fulfills the obligation of confidentiality for applicant's commercial information, and technique document.
10. 本报告私自转让、盗用、冒用、涂改、未经本单位批准的复制(全文复制除外)或以其它任何形式的篡改均属无效, 本单位将对上述行为追究其相应的法律责任。
Any unauthorized transfer, appropriation, falsification, alteration, copying (except full text copying) or alteration in any other form of this report without the approval of PONY shall be invalid. PONY shall strictly investigate the corresponding legal liability for the aforesaid behavior.

▲ 防伪说明(Anti-counterfeiting Instructions):

1. 报告编号是唯一的。
The report number is unique.
 2. 扫描报告首页下方二维码, 即可查询报告真伪。
Scan the QR code below the first page to check the authenticity of the report.
- *****

 **全国服务热线**
400-819-5688
WWW.PONYTEST.COM



北京实验室: (010) 83055000 郑州实验室: (0371) 69350670 成都谱尼计量实验室: (028) 87702708 宁波实验室: (0574) 87736499
北京谱尼科技公司: (010) 80415661 郑州谱尼职业卫生公司: (0371) 80967099 贵州实验室: (0851) 85221000 合肥实验室: (0551) 63843474
北京谱尼计量实验室: (010) 82492998 新疆实验室: (0991) 6684186 上海实验室: (021) 64851999 深圳实验室: (0755) 26050909
青岛实验室: (0532) 88706866 石家庄实验室: (0311) 85376660 苏州实验室: (0512) 62997900 深圳谱尼计量实验室: (0755) 26050909-846
天津实验室: (022) 23607888 西安实验室: (029) 89608785 苏州汽车座椅实验室及儿童安全座椅 谱尼深圳通测: (0755) 27673339
长春实验室: (0431) 80530198 西安创尼信息科技有限公司: (029) 81123093 碰撞实验室: (0512) 62997900 广州实验室: (020) 89224310
沈阳实验室: (024) 22811886 西安查德威克检测技术有限公司: (029) 85729073 武汉实验室: (027) 83997127 南宁实验室: (0771) 5518818
大连实验室: (0411) 87336618 呼和浩特实验室: (0471) 3450025 武汉车附所: (027) 82318175 厦门实验室: (0592) 5568048
哈尔滨实验室: (0451) 58627755 成都实验室: (028) 87702708 杭州实验室: (0571) 87219096



测试报告 Test Report NO.: BRCYWTJB4030207D3a

零件清单 Part List:

样品编号 Sample Number	零件名称 Part Name
1	双电层超级电容器 (引线式) Double-layer Super Capacitor(Radial type)
1-1	电极 Electrode
1-1-1	金属
1-1-2	非金属
1-2	电解液 Electrolyte
1-3	隔膜 Separator
1-4	高温胶带 (黄) High-temp tape (yellow)
1-5	高温胶带 (绿) High-temp tape (green)
1-6	正极引线 Positive lead
1-7	负极引线 Negative lead
1-8	胶塞 Rubber plug
1-9	铝壳 Aluminum case
1-10	套管 Sleeve
2	超级电容器模组 (引线式) Super Capacitor module(Radial type)
2-1	电极 Electrode
2-1-1 同 refer to 1-1-1	金属
2-1-2 同 refer to 1-1-2	非金属
2-2 同 refer to 1-2	电解液 Electrolyte
2-3 同 refer to 1-3	隔膜 Separator
2-4 同 refer to 1-4	高温胶带 (黄) High-temp tape (yellow)
2-5 同 refer to 1-5	高温胶带 (绿) High-temp tape (green)
2-6 同 refer to 1-6	正极引线 Positive lead
2-7 同 refer to 1-7	负极引线 Negative lead
2-8 同 refer to 1-8	胶塞 Rubber plug
2-9 同 refer to 1-9	铝壳 Aluminum case
2-10 同 refer to 1-10	套管 Sleeve
2-11	PCBPCB
2-12	绝缘贴皮 Insulation patch
2-13	焊锡丝 Solder wire
3	双电层超级电容器 (焊片式) Double-layer Super Capacitor(Snap-in type)
3-1	电极 Electrode
3-1-1 同 refer to 1-1-1	金属

———本页以下空白 The page below is blank———





测试报告 Test Report NO.: BRCYWTJB4030207D3a

零件清单 Part List:

样品编号 Sample Number	零件名称 Part Name
3-1-2 同 refer to 1-1-2	非金属
3-2 同 refer to 1-2	电解液 Electrolyte
3-3 同 refer to 1-3	隔膜 Separator
3-4 同 refer to 1-4	高温胶带 (黄) High-temp tape (yellow)
3-5 同 refer to 1-9	铝壳 Aluminum case
3-6 同 refer to 1-10	套管 Sleeve
3-7	华司 spring washer
3-8	垫片 capacitor gasket
3-9	盖板 Terminal board
3-9-1	金属 1
3-9-2	金属 2
3-9-3	非金属 1
3-9-4	非金属 2
3-10	导箔条 Line
4	双电层超级电容器 (灌胶品) Double-layer Super Capacitor(Glue filling products)
4-1-1 同 refer to 1-1-1	金属
4-1-2 同 refer to 1-1-2	非金属
4-2 同 refer to 1-2	电解液 Electrolyte
4-3 同 refer to 1-3	隔膜 Separator
4-4 同 refer to 1-4	高温胶带 (黄) High-temp tape (yellow)
4-5 同 refer to 1-5	高温胶带 (绿) High-temp tape (green)
4-6 同 refer to 1-6	正极引线 Positive lead
4-7 同 refer to 1-7	负极引线 Negative lead
4-8 同 refer to 1-8	胶塞 Rubber plug
4-9 同 refer to 1-9	铝壳 Aluminum case
4-10 同 refer to 1-10	套管 Sleeve
4-11	密封胶 Sealant
4-12	塑壳 Plastic shell
5	双电层超级电容器 (螺栓品) Double layer supercapacitors (Screw type)
5-1	电极 Electrode
5-1-1 同 refer to 1-1-1	金属
5-1-2 同 refer to 1-1-2	非金属

————— 本页以下空白 The page below is blank —————





测试报告 Test Report NO.: BRCYWTJB4030207D3a

零件清单 Part List:

样品编号 Sample Number	零件名称 Part Name
5-2 同 refer to 1-2	电解液 Electrolyte
5-3 同 refer to 1-3	隔膜 Separator
5-4 同 refer to 1-4	高温胶带 (黄) High-temp tape (yellow)
5-5 同 refer to 1-9	铝壳 Aluminum case
5-6 同 refer to 1-10	套管 Sleeve
5-7	螺栓盖板 Screw terminal board
5-8	正极极流板 Positive bus bar
5-9	负极极流板 Negative bus bar
5-10	隔离圈 Spacer ring
5-11	螺栓胶塞 Screw rubber plug
5-12	O 型圈 O-ring
5-13	铝塞 Aluminum plug
5-14	高温胶带 (黑) High-temp tape (black)
6	双电层超级电容器 (全极耳) Double layer supercapacitors (Full tab laser welding type)
6-1	电极 Electrode
6-1-1 同 refer to 1-1-1	金属
6-1-2 同 refer to 1-1-2	非金属
6-2 同 refer to 1-2	电解液 Electrolyte
6-3 同 refer to 1-3	隔膜 Separator
6-4 同 refer to 1-4	高温胶带 (黄) High-temp tape (yellow)
6-5 同 refer to 1-9	铝壳 Aluminum case
6-6 同 refer to 1-10	套管 Sleeve
6-7 同 refer to 3-8	垫片 capacitor gasket
6-8 同 refer to 5-11	螺栓胶塞 Screw rubber plug
6-9 同 refer to 5-13	铝塞 Aluminum plug
6-10 同 refer to 5-14	高温胶带 (黑) High-temp tape (black)
6-11	下焊片 Lower welding pad
6-12	负极端子 Negative Terminal
6-13	铆接垫圈 Riveted washer
6-14	上盖 Upper cover
6-15	绝缘密封垫圈 Insulation sealing gasket
6-16	上焊片 Upper welding pad
6-17	正极端子 Positive Terminal
6-18	银色标签 Silver Label
6-19	纸质标签 Paper labels

————— 本页以下空白 The page below is blank —————





测试报告 Test Report NO.: BRCYWTJB4030207D3a

测试结果 Test Result (单位 Unit: mg/kg)

测试项目 Test Item		方法检出限 MDL	样品编号和测试结果 Sample Number&Test Result					RoHS 限量 RoHS Limit
			1-1-1	1-1-2	1-2	1-3	1-4	
铅 Lead (Pb)		2	N.D.	N.D.	N.D.	N.D.	N.D.	1000
镉 Cadmium (Cd)		2	N.D.	N.D.	N.D.	N.D.	N.D.	100
汞 Mercury (Hg)		2	N.D.	N.D.	N.D.	N.D.	N.D.	1000
六价铬 Hexavalent Chromium (Cr ⁶⁺)	非金属 NON-META	8	/	N.D.	N.D.	N.D.	N.D.	1000
	金属 METAL	参见备注(4) See Note (4)	阴性 Negative	/	/	/	/	—
多溴联苯之和 Sum of PBBs		—	/	N.D.	N.D.	N.D.	N.D.	1000
一溴联苯 Bromobiphenyl		5	/	N.D.	N.D.	N.D.	N.D.	—
二溴联苯 Dibromobiphenyl		5	/	N.D.	N.D.	N.D.	N.D.	—
三溴联苯 Tribromobiphenyl		5	/	N.D.	N.D.	N.D.	N.D.	—
四溴联苯 Tetrabromobiphenyl		5	/	N.D.	N.D.	N.D.	N.D.	—
五溴联苯 Pentabromobiphenyl		5	/	N.D.	N.D.	N.D.	N.D.	—
六溴联苯 Hexabromobiphenyl		5	/	N.D.	N.D.	N.D.	N.D.	—
七溴联苯 Heptabromobiphenyl		5	/	N.D.	N.D.	N.D.	N.D.	—
八溴联苯 Octabromobiphenyl		5	/	N.D.	N.D.	N.D.	N.D.	—
九溴联苯 Nonabromobiphenyl		5	/	N.D.	N.D.	N.D.	N.D.	—
十溴联苯 Decabromobiphenyl		5	/	N.D.	N.D.	N.D.	N.D.	—
多溴二苯醚之和 Sum of PBDEs		—	/	N.D.	N.D.	N.D.	N.D.	1000
一溴二苯醚 Bromodiphenyl ether		5	/	N.D.	N.D.	N.D.	N.D.	—
二溴二苯醚 Dibromodiphenyl ether		5	/	N.D.	N.D.	N.D.	N.D.	—
三溴二苯醚 Tribromodiphenyl ether		5	/	N.D.	N.D.	N.D.	N.D.	—
四溴二苯醚 Tetrabromodiphenyl ether		5	/	N.D.	N.D.	N.D.	N.D.	—
五溴二苯醚 Pentabromodiphenyl ether		5	/	N.D.	N.D.	N.D.	N.D.	—
六溴二苯醚 Hexabromodiphenyl ether		5	/	N.D.	N.D.	N.D.	N.D.	—
七溴二苯醚 Heptabromodiphenyl ether		5	/	N.D.	N.D.	N.D.	N.D.	—
八溴二苯醚 Octabromodiphenyl ether		5	/	N.D.	N.D.	N.D.	N.D.	—
九溴二苯醚 Nonabromodiphenyl ether		5	/	N.D.	N.D.	N.D.	N.D.	—
十溴二苯醚 Decabromodiphenyl ether		5	/	N.D.	N.D.	N.D.	N.D.	—

—————本页以下空白 The page below is blank—————





测试报告 Test Report NO.: BRCYWTJB4030207D3a

测试结果 Test Result (单位 Unit: mg/kg)

测试项目 Test Item		方法检出限 MDL	样品编号和测试结果 Sample Number&Test Result					RoHS 限量 RoHS Limit
			1-5	1-6	1-7	1-8	1-9	
铅 Lead (Pb)		2	N.D.	N.D.	N.D.	N.D.	N.D.	1000
镉 Cadmium (Cd)		2	N.D.	N.D.	N.D.	N.D.	N.D.	100
汞 Mercury (Hg)		2	N.D.	N.D.	N.D.	N.D.	N.D.	1000
六价铬 Hexavalent Chromium (Cr ⁶⁺)	非金属 NON-META	8	N.D.	/	/	N.D.	/	1000
	金属 METAL	参见备注(4) See Note (4)	/	阴性 Negative	阴性 Negative	/	阴性 Negative	—
多溴联苯之和 Sum of PBBs		—	N.D.	/	/	N.D.	/	1000
一溴联苯 Bromobiphenyl		5	N.D.	/	/	N.D.	/	—
二溴联苯 Dibromobiphenyl		5	N.D.	/	/	N.D.	/	—
三溴联苯 Tribromobiphenyl		5	N.D.	/	/	N.D.	/	—
四溴联苯 Tetrabromobiphenyl		5	N.D.	/	/	N.D.	/	—
五溴联苯 Pentabromobiphenyl		5	N.D.	/	/	N.D.	/	—
六溴联苯 Hexabromobiphenyl		5	N.D.	/	/	N.D.	/	—
七溴联苯 Heptabromobiphenyl		5	N.D.	/	/	N.D.	/	—
八溴联苯 Octabromobiphenyl		5	N.D.	/	/	N.D.	/	—
九溴联苯 Nonabromobiphenyl		5	N.D.	/	/	N.D.	/	—
十溴联苯 Decabromobiphenyl		5	N.D.	/	/	N.D.	/	—
多溴二苯醚之和 Sum of PBDEs		—	N.D.	/	/	N.D.	/	1000
一溴二苯醚 Bromodiphenyl ether		5	N.D.	/	/	N.D.	/	—
二溴二苯醚 Dibromodiphenyl ether		5	N.D.	/	/	N.D.	/	—
三溴二苯醚 Tribromodiphenyl ether		5	N.D.	/	/	N.D.	/	—
四溴二苯醚 Tetrabromodiphenyl ether		5	N.D.	/	/	N.D.	/	—
五溴二苯醚 Pentabromodiphenyl ether		5	N.D.	/	/	N.D.	/	—
六溴二苯醚 Hexabromodiphenyl ether		5	N.D.	/	/	N.D.	/	—
七溴二苯醚 Heptabromodiphenyl ether		5	N.D.	/	/	N.D.	/	—
八溴二苯醚 Octabromodiphenyl ether		5	N.D.	/	/	N.D.	/	—
九溴二苯醚 Nonabromodiphenyl ether		5	N.D.	/	/	N.D.	/	—
十溴二苯醚 Decabromodiphenyl ether		5	N.D.	/	/	N.D.	/	—

———本页以下空白 The page below is blank———





测试报告 Test Report NO.: BRCYWTJB4030207D3a

测试结果 Test Result (单位 Unit: mg/kg)

测试项目 Test Item	方法检出限 MDL	样品编号和测试结果 Sample Number&Test Result					RoHS 限量 RoHS Limit	
		1-10	2-1-1 同 refer to 1-1-1	2-1-2 同 refer to 1-1-2	2-2 同 refer to 1-2	2-3 同 refer to 1-3		
铅 Lead (Pb)	2	N.D.	N.D.	N.D.	N.D.	N.D.	1000	
镉 Cadmium (Cd)	2	N.D.	N.D.	N.D.	N.D.	N.D.	100	
汞 Mercury (Hg)	2	N.D.	N.D.	N.D.	N.D.	N.D.	1000	
六价铬 Hexavalent Chromium (Cr ⁶⁺)	非金属 NON-META	8	N.D.	/	N.D.	N.D.	N.D.	1000
	金属 METAL	参见备注(4) See Note (4)	/	阴性 Negative	/	/	/	—
多溴联苯之和 Sum of PBBs	—	N.D.	/	N.D.	N.D.	N.D.	1000	
一溴联苯 Bromobiphenyl	5	N.D.	/	N.D.	N.D.	N.D.	—	
二溴联苯 Dibromobiphenyl	5	N.D.	/	N.D.	N.D.	N.D.	—	
三溴联苯 Tribromobiphenyl	5	N.D.	/	N.D.	N.D.	N.D.	—	
四溴联苯 Tetrabromobiphenyl	5	N.D.	/	N.D.	N.D.	N.D.	—	
五溴联苯 Pentabromobiphenyl	5	N.D.	/	N.D.	N.D.	N.D.	—	
六溴联苯 Hexabromobiphenyl	5	N.D.	/	N.D.	N.D.	N.D.	—	
七溴联苯 Heptabromobiphenyl	5	N.D.	/	N.D.	N.D.	N.D.	—	
八溴联苯 Octabromobiphenyl	5	N.D.	/	N.D.	N.D.	N.D.	—	
九溴联苯 Nonabromobiphenyl	5	N.D.	/	N.D.	N.D.	N.D.	—	
十溴联苯 Decabromobiphenyl	5	N.D.	/	N.D.	N.D.	N.D.	—	
多溴二苯醚之和 Sum of PBDEs	—	N.D.	/	N.D.	N.D.	N.D.	1000	
一溴二苯醚 Bromodiphenyl ether	5	N.D.	/	N.D.	N.D.	N.D.	—	
二溴二苯醚 Dibromodiphenyl ether	5	N.D.	/	N.D.	N.D.	N.D.	—	
三溴二苯醚 Tribromodiphenyl ether	5	N.D.	/	N.D.	N.D.	N.D.	—	
四溴二苯醚 Tetrabromodiphenyl ether	5	N.D.	/	N.D.	N.D.	N.D.	—	
五溴二苯醚 Pentabromodiphenyl ether	5	N.D.	/	N.D.	N.D.	N.D.	—	
六溴二苯醚 Hexabromodiphenyl ether	5	N.D.	/	N.D.	N.D.	N.D.	—	
七溴二苯醚 Heptabromodiphenyl ether	5	N.D.	/	N.D.	N.D.	N.D.	—	
八溴二苯醚 Octabromodiphenyl ether	5	N.D.	/	N.D.	N.D.	N.D.	—	
九溴二苯醚 Nonabromodiphenyl ether	5	N.D.	/	N.D.	N.D.	N.D.	—	
十溴二苯醚 Decabromodiphenyl ether	5	N.D.	/	N.D.	N.D.	N.D.	—	

本页以下空白 The page below is blank





测试报告 Test Report NO.: BRCYWTJB4030207D3a

测试结果 Test Result (单位 Unit: mg/kg)

测试项目 Test Item	方法检出限 MDL	样品编号和测试结果 Sample Number&Test Result					RoHS 限量 RoHS Limit	
		2-4 同 refer to 1-4	2-5 同 refer to 1-5	2-6 同 refer to 1-6	2-7 同 refer to 1-7	2-8 同 refer to 1-8		
铅 Lead (Pb)	2	N.D.	N.D.	N.D.	N.D.	N.D.	1000	
镉 Cadmium (Cd)	2	N.D.	N.D.	N.D.	N.D.	N.D.	100	
汞 Mercury (Hg)	2	N.D.	N.D.	N.D.	N.D.	N.D.	1000	
六价铬 Hexavalent Chromium (Cr ⁶⁺)	非金属 NON-META	8	N.D.	N.D.	/	/	N.D.	1000
	金属 METAL	参见备注(4) See Note (4)	/	/	阴性 Negative	阴性 Negative	/	—
多溴联苯之和 Sum of PBBs	—	N.D.	N.D.	/	/	N.D.	1000	
一溴联苯 Bromobiphenyl	5	N.D.	N.D.	/	/	N.D.	—	
二溴联苯 Dibromobiphenyl	5	N.D.	N.D.	/	/	N.D.	—	
三溴联苯 Tribromobiphenyl	5	N.D.	N.D.	/	/	N.D.	—	
四溴联苯 Tetrabromobiphenyl	5	N.D.	N.D.	/	/	N.D.	—	
五溴联苯 Pentabromobiphenyl	5	N.D.	N.D.	/	/	N.D.	—	
六溴联苯 Hexabromobiphenyl	5	N.D.	N.D.	/	/	N.D.	—	
七溴联苯 Heptabromobiphenyl	5	N.D.	N.D.	/	/	N.D.	—	
八溴联苯 Octabromobiphenyl	5	N.D.	N.D.	/	/	N.D.	—	
九溴联苯 Nonabromobiphenyl	5	N.D.	N.D.	/	/	N.D.	—	
十溴联苯 Decabromobiphenyl	5	N.D.	N.D.	/	/	N.D.	—	
多溴二苯醚之和 Sum of PBDEs	—	N.D.	N.D.	/	/	N.D.	1000	
一溴二苯醚 Bromodiphenyl ether	5	N.D.	N.D.	/	/	N.D.	—	
二溴二苯醚 Dibromodiphenyl ether	5	N.D.	N.D.	/	/	N.D.	—	
三溴二苯醚 Tribromodiphenyl ether	5	N.D.	N.D.	/	/	N.D.	—	
四溴二苯醚 Tetrabromodiphenyl ether	5	N.D.	N.D.	/	/	N.D.	—	
五溴二苯醚 Pentabromodiphenyl ether	5	N.D.	N.D.	/	/	N.D.	—	
六溴二苯醚 Hexabromodiphenyl ether	5	N.D.	N.D.	/	/	N.D.	—	
七溴二苯醚 Heptabromodiphenyl ether	5	N.D.	N.D.	/	/	N.D.	—	
八溴二苯醚 Octabromodiphenyl ether	5	N.D.	N.D.	/	/	N.D.	—	
九溴二苯醚 Nonabromodiphenyl ether	5	N.D.	N.D.	/	/	N.D.	—	
十溴二苯醚 Decabromodiphenyl ether	5	N.D.	N.D.	/	/	N.D.	—	

本页以下空白 The page below is blank





测试报告 Test Report NO.: BRCYWTJB4030207D3a

测试结果 Test Result (单位 Unit: mg/kg)

测试项目 Test Item	方法检出限 MDL	样品编号和测试结果 Sample Number&Test Result						RoHS 限量 RoHS Limit	
		2-9 同 refer to 1-9	2-10 同 refer to 1-10	2-11	2-12	2-13	3-1-1 同 refer to 1-1-1		
铅 Lead (Pb)	2	N.D.	N.D.	N.D.	N.D.	49	N.D.	1000	
镉 Cadmium (Cd)	2	N.D.	N.D.	N.D.	N.D.	N.D.	N.D.	100	
汞 Mercury (Hg)	2	N.D.	N.D.	N.D.	N.D.	N.D.	N.D.	1000	
六价铬 Hexavalent Chromium (Cr ⁶⁺)	非金属 NON-META	8	/	N.D.	N.D.	N.D.	/	/	1000
	金属 METAL	参见备注(4) See Note (4)	阴性 Negative	/	/	/	阴性 Negative	阴性 Negative	—
多溴联苯之和 Sum of PBBs	—	/	N.D.	N.D.	N.D.	/	/	1000	
一溴联苯 Bromobiphenyl	5	/	N.D.	N.D.	N.D.	/	/	—	
二溴联苯 Dibromobiphenyl	5	/	N.D.	N.D.	N.D.	/	/	—	
三溴联苯 Tribromobiphenyl	5	/	N.D.	N.D.	N.D.	/	/	—	
四溴联苯 Tetrabromobiphenyl	5	/	N.D.	N.D.	N.D.	/	/	—	
五溴联苯 Pentabromobiphenyl	5	/	N.D.	N.D.	N.D.	/	/	—	
六溴联苯 Hexabromobiphenyl	5	/	N.D.	N.D.	N.D.	/	/	—	
七溴联苯 Heptabromobiphenyl	5	/	N.D.	N.D.	N.D.	/	/	—	
八溴联苯 Octabromobiphenyl	5	/	N.D.	N.D.	N.D.	/	/	—	
九溴联苯 Nonabromobiphenyl	5	/	N.D.	N.D.	N.D.	/	/	—	
十溴联苯 Decabromobiphenyl	5	/	N.D.	N.D.	N.D.	/	/	—	
多溴二苯醚之和 Sum of PBDEs	—	/	N.D.	N.D.	N.D.	/	/	1000	
一溴二苯醚 Bromodiphenyl ether	5	/	N.D.	N.D.	N.D.	/	/	—	
二溴二苯醚 Dibromodiphenyl ether	5	/	N.D.	N.D.	N.D.	/	/	—	
三溴二苯醚 Tribromodiphenyl ether	5	/	N.D.	N.D.	N.D.	/	/	—	
四溴二苯醚 Tetrabromodiphenyl ether	5	/	N.D.	N.D.	N.D.	/	/	—	
五溴二苯醚 Pentabromodiphenyl ether	5	/	N.D.	N.D.	N.D.	/	/	—	
六溴二苯醚 Hexabromodiphenyl ether	5	/	N.D.	N.D.	N.D.	/	/	—	
七溴二苯醚 Heptabromodiphenyl ether	5	/	N.D.	N.D.	N.D.	/	/	—	
八溴二苯醚 Octabromodiphenyl ether	5	/	N.D.	N.D.	N.D.	/	/	—	
九溴二苯醚 Nonabromodiphenyl ether	5	/	N.D.	N.D.	N.D.	/	/	—	
十溴二苯醚 Decabromodiphenyl ether	5	/	N.D.	N.D.	N.D.	/	/	—	

———本页以下空白 The page below is blank———





测试报告 Test Report NO.: BRCYWTJB4030207D3a

测试结果 Test Result (单位 Unit: mg/kg)

测试项目 Test Item	方法检出限 MDL	样品编号和测试结果 Sample Number&Test Result					RoHS 限量 RoHS Limit	
		3-1-2 同 refer to 1-1-2	3-2 同 refer to 1-2	3-3 同 refer to 1-3	3-4 同 refer to 1-4	3-5 同 refer to 1-9		
铅 Lead (Pb)	2	N.D.	N.D.	N.D.	N.D.	N.D.	1000	
镉 Cadmium (Cd)	2	N.D.	N.D.	N.D.	N.D.	N.D.	100	
汞 Mercury (Hg)	2	N.D.	N.D.	N.D.	N.D.	N.D.	1000	
六价铬 Hexavalent Chromium (Cr ⁶⁺)	非金属 NON-META	8	N.D.	N.D.	N.D.	N.D.	/	1000
	金属 METAL	参见备注(4) See Note (4)	/	/	/	/	阴性 Negative	—
多溴联苯之和 Sum of PBBs	—	N.D.	N.D.	N.D.	N.D.	/	1000	
一溴联苯 Bromobiphenyl	5	N.D.	N.D.	N.D.	N.D.	/	—	
二溴联苯 Dibromobiphenyl	5	N.D.	N.D.	N.D.	N.D.	/	—	
三溴联苯 Tribromobiphenyl	5	N.D.	N.D.	N.D.	N.D.	/	—	
四溴联苯 Tetrabromobiphenyl	5	N.D.	N.D.	N.D.	N.D.	/	—	
五溴联苯 Pentabromobiphenyl	5	N.D.	N.D.	N.D.	N.D.	/	—	
六溴联苯 Hexabromobiphenyl	5	N.D.	N.D.	N.D.	N.D.	/	—	
七溴联苯 Heptabromobiphenyl	5	N.D.	N.D.	N.D.	N.D.	/	—	
八溴联苯 Octabromobiphenyl	5	N.D.	N.D.	N.D.	N.D.	/	—	
九溴联苯 Nonabromobiphenyl	5	N.D.	N.D.	N.D.	N.D.	/	—	
十溴联苯 Decabromobiphenyl	5	N.D.	N.D.	N.D.	N.D.	/	—	
多溴二苯醚之和 Sum of PBDEs	—	N.D.	N.D.	N.D.	N.D.	/	1000	
一溴二苯醚 Bromodiphenyl ether	5	N.D.	N.D.	N.D.	N.D.	/	—	
二溴二苯醚 Dibromodiphenyl ether	5	N.D.	N.D.	N.D.	N.D.	/	—	
三溴二苯醚 Tribromodiphenyl ether	5	N.D.	N.D.	N.D.	N.D.	/	—	
四溴二苯醚 Tetrabromodiphenyl ether	5	N.D.	N.D.	N.D.	N.D.	/	—	
五溴二苯醚 Pentabromodiphenyl ether	5	N.D.	N.D.	N.D.	N.D.	/	—	
六溴二苯醚 Hexabromodiphenyl ether	5	N.D.	N.D.	N.D.	N.D.	/	—	
七溴二苯醚 Heptabromodiphenyl ether	5	N.D.	N.D.	N.D.	N.D.	/	—	
八溴二苯醚 Octabromodiphenyl ether	5	N.D.	N.D.	N.D.	N.D.	/	—	
九溴二苯醚 Nonabromodiphenyl ether	5	N.D.	N.D.	N.D.	N.D.	/	—	
十溴二苯醚 Decabromodiphenyl ether	5	N.D.	N.D.	N.D.	N.D.	/	—	

本页以下空白 The page below is blank





测试报告 Test Report NO.: BRCYWTJB4030207D3a

测试结果 Test Result (单位 Unit: mg/kg)

测试项目 Test Item	方法检出限 MDL	样品编号和测试结果 Sample Number&Test Result					RoHS 限量 RoHS Limit	
		3-6 同 refer to 1-10	3-7	3-8	3-9-1	3-9-2		
铅 Lead (Pb)	2	N.D.	N.D.	N.D.	N.D.	43	1000	
镉 Cadmium (Cd)	2	N.D.	N.D.	N.D.	N.D.	N.D.	100	
汞 Mercury (Hg)	2	N.D.	N.D.	N.D.	N.D.	N.D.	1000	
六价铬 Hexavalent Chromium (Cr ⁶⁺)	非金属 NON-META	8	N.D.	/	N.D.	/	/	1000
	金属 METAL	参见备注(4) See Note (4)	/	阴性 Negative	/	阴性 Negative	阴性 Negative	—
多溴联苯之和 Sum of PBBs	—	N.D.	/	N.D.	/	/	1000	
一溴联苯 Bromobiphenyl	5	N.D.	/	N.D.	/	/	—	
二溴联苯 Dibromobiphenyl	5	N.D.	/	N.D.	/	/	—	
三溴联苯 Tribromobiphenyl	5	N.D.	/	N.D.	/	/	—	
四溴联苯 Tetrabromobiphenyl	5	N.D.	/	N.D.	/	/	—	
五溴联苯 Pentabromobiphenyl	5	N.D.	/	N.D.	/	/	—	
六溴联苯 Hexabromobiphenyl	5	N.D.	/	N.D.	/	/	—	
七溴联苯 Heptabromobiphenyl	5	N.D.	/	N.D.	/	/	—	
八溴联苯 Octabromobiphenyl	5	N.D.	/	N.D.	/	/	—	
九溴联苯 Nonabromobiphenyl	5	N.D.	/	N.D.	/	/	—	
十溴联苯 Decabromobiphenyl	5	N.D.	/	N.D.	/	/	—	
多溴二苯醚之和 Sum of PBDEs	—	N.D.	/	N.D.	/	/	1000	
一溴二苯醚 Bromodiphenyl ether	5	N.D.	/	N.D.	/	/	—	
二溴二苯醚 Dibromodiphenyl ether	5	N.D.	/	N.D.	/	/	—	
三溴二苯醚 Tribromodiphenyl ether	5	N.D.	/	N.D.	/	/	—	
四溴二苯醚 Tetrabromodiphenyl ether	5	N.D.	/	N.D.	/	/	—	
五溴二苯醚 Pentabromodiphenyl ether	5	N.D.	/	N.D.	/	/	—	
六溴二苯醚 Hexabromodiphenyl ether	5	N.D.	/	N.D.	/	/	—	
七溴二苯醚 Heptabromodiphenyl ether	5	N.D.	/	N.D.	/	/	—	
八溴二苯醚 Octabromodiphenyl ether	5	N.D.	/	N.D.	/	/	—	
九溴二苯醚 Nonabromodiphenyl ether	5	N.D.	/	N.D.	/	/	—	
十溴二苯醚 Decabromodiphenyl ether	5	N.D.	/	N.D.	/	/	—	

—————本页以下空白 The page below is blank—————





测试报告 Test Report NO.: BRCYWTJB4030207D3a

测试结果 Test Result (单位 Unit: mg/kg)

测试项目 Test Item	方法检出限 MDL	样品编号和测试结果 Sample Number&Test Result					RoHS 限量 RoHS Limit	
		3-9-3	3-9-4	3-10	4-1-1 同 refer to 1-1-1	4-1-2 同 refer to 1-1-2		
铅 Lead (Pb)	2	44	N.D.	N.D.	N.D.	N.D.	1000	
镉 Cadmium (Cd)	2	N.D.	N.D.	N.D.	N.D.	N.D.	100	
汞 Mercury (Hg)	2	N.D.	N.D.	N.D.	N.D.	N.D.	1000	
六价铬 Hexavalent Chromium (Cr ⁶⁺)	非金属 NON-META	8	N.D.	N.D.	/	/	N.D.	1000
	金属 METAL	参见备注(4) See Note (4)	/	/	阴性 Negative	阴性 Negative	/	—
多溴联苯之和 Sum of PBBs	—	N.D.	N.D.	/	/	N.D.	1000	
一溴联苯 Bromobiphenyl	5	N.D.	N.D.	/	/	N.D.	—	
二溴联苯 Dibromobiphenyl	5	N.D.	N.D.	/	/	N.D.	—	
三溴联苯 Tribromobiphenyl	5	N.D.	N.D.	/	/	N.D.	—	
四溴联苯 Tetrabromobiphenyl	5	N.D.	N.D.	/	/	N.D.	—	
五溴联苯 Pentabromobiphenyl	5	N.D.	N.D.	/	/	N.D.	—	
六溴联苯 Hexabromobiphenyl	5	N.D.	N.D.	/	/	N.D.	—	
七溴联苯 Heptabromobiphenyl	5	N.D.	N.D.	/	/	N.D.	—	
八溴联苯 Octabromobiphenyl	5	N.D.	N.D.	/	/	N.D.	—	
九溴联苯 Nonabromobiphenyl	5	N.D.	N.D.	/	/	N.D.	—	
十溴联苯 Decabromobiphenyl	5	N.D.	N.D.	/	/	N.D.	—	
多溴二苯醚之和 Sum of PBDEs	—	N.D.	N.D.	/	/	N.D.	1000	
一溴二苯醚 Bromodiphenyl ether	5	N.D.	N.D.	/	/	N.D.	—	
二溴二苯醚 Dibromodiphenyl ether	5	N.D.	N.D.	/	/	N.D.	—	
三溴二苯醚 Tribromodiphenyl ether	5	N.D.	N.D.	/	/	N.D.	—	
四溴二苯醚 Tetrabromodiphenyl ether	5	N.D.	N.D.	/	/	N.D.	—	
五溴二苯醚 Pentabromodiphenyl ether	5	N.D.	N.D.	/	/	N.D.	—	
六溴二苯醚 Hexabromodiphenyl ether	5	N.D.	N.D.	/	/	N.D.	—	
七溴二苯醚 Heptabromodiphenyl ether	5	N.D.	N.D.	/	/	N.D.	—	
八溴二苯醚 Octabromodiphenyl ether	5	N.D.	N.D.	/	/	N.D.	—	
九溴二苯醚 Nonabromodiphenyl ether	5	N.D.	N.D.	/	/	N.D.	—	
十溴二苯醚 Decabromodiphenyl ether	5	N.D.	N.D.	/	/	N.D.	—	

———本页以下空白 The page below is blank———





测试报告 Test Report NO.: BRCYWTJB4030207D3a

测试结果 Test Result (单位 Unit: mg/kg)

测试项目 Test Item	方法检出限 MDL	样品编号和测试结果 Sample Number&Test Result					RoHS 限量 RoHS Limit	
		4-2 同 refer to 1-2	4-3 同 refer to 1-3	4-4 同 refer to 1-4	4-5 同 refer to 1-5	4-6 同 refer to 1-6		
铅 Lead (Pb)	2	N.D.	N.D.	N.D.	N.D.	N.D.	1000	
镉 Cadmium (Cd)	2	N.D.	N.D.	N.D.	N.D.	N.D.	100	
汞 Mercury (Hg)	2	N.D.	N.D.	N.D.	N.D.	N.D.	1000	
六价铬 Hexavalent Chromium (Cr ⁶⁺)	非金属 NON-META	8	N.D.	N.D.	N.D.	N.D.	/	1000
	金属 METAL	参见备注(4) See Note (4)	/	/	/	/	阴性 Negative	—
多溴联苯之和 Sum of PBBs	—	N.D.	N.D.	N.D.	N.D.	/	1000	
一溴联苯 Bromobiphenyl	5	N.D.	N.D.	N.D.	N.D.	/	—	
二溴联苯 Dibromobiphenyl	5	N.D.	N.D.	N.D.	N.D.	/	—	
三溴联苯 Tribromobiphenyl	5	N.D.	N.D.	N.D.	N.D.	/	—	
四溴联苯 Tetrabromobiphenyl	5	N.D.	N.D.	N.D.	N.D.	/	—	
五溴联苯 Pentabromobiphenyl	5	N.D.	N.D.	N.D.	N.D.	/	—	
六溴联苯 Hexabromobiphenyl	5	N.D.	N.D.	N.D.	N.D.	/	—	
七溴联苯 Heptabromobiphenyl	5	N.D.	N.D.	N.D.	N.D.	/	—	
八溴联苯 Octabromobiphenyl	5	N.D.	N.D.	N.D.	N.D.	/	—	
九溴联苯 Nonabromobiphenyl	5	N.D.	N.D.	N.D.	N.D.	/	—	
十溴联苯 Decabromobiphenyl	5	N.D.	N.D.	N.D.	N.D.	/	—	
多溴二苯醚之和 Sum of PBDEs	—	N.D.	N.D.	N.D.	N.D.	/	1000	
一溴二苯醚 Bromodiphenyl ether	5	N.D.	N.D.	N.D.	N.D.	/	—	
二溴二苯醚 Dibromodiphenyl ether	5	N.D.	N.D.	N.D.	N.D.	/	—	
三溴二苯醚 Tribromodiphenyl ether	5	N.D.	N.D.	N.D.	N.D.	/	—	
四溴二苯醚 Tetrabromodiphenyl ether	5	N.D.	N.D.	N.D.	N.D.	/	—	
五溴二苯醚 Pentabromodiphenyl ether	5	N.D.	N.D.	N.D.	N.D.	/	—	
六溴二苯醚 Hexabromodiphenyl ether	5	N.D.	N.D.	N.D.	N.D.	/	—	
七溴二苯醚 Heptabromodiphenyl ether	5	N.D.	N.D.	N.D.	N.D.	/	—	
八溴二苯醚 Octabromodiphenyl ether	5	N.D.	N.D.	N.D.	N.D.	/	—	
九溴二苯醚 Nonabromodiphenyl ether	5	N.D.	N.D.	N.D.	N.D.	/	—	
十溴二苯醚 Decabromodiphenyl ether	5	N.D.	N.D.	N.D.	N.D.	/	—	

本页以下空白 The page below is blank





测试报告 Test Report NO.: BRCYWTJB4030207D3a

测试结果 Test Result (单位 Unit: mg/kg)

测试项目 Test Item	方法检出限 MDL	样品编号和测试结果 Sample Number&Test Result					RoHS 限量 RoHS Limit	
		4-7 同 refer to 1-7	4-8 同 refer to 1-8	4-9 同 refer to 1-9	4-10 同 refer to 1-10	4-11		
铅 Lead (Pb)	2	N.D.	N.D.	N.D.	N.D.	N.D.	1000	
镉 Cadmium (Cd)	2	N.D.	N.D.	N.D.	N.D.	N.D.	100	
汞 Mercury (Hg)	2	N.D.	N.D.	N.D.	N.D.	N.D.	1000	
六价铬 Hexavalent Chromium (Cr ⁶⁺)	非金属 NON-META	8	/	N.D.	/	N.D.	N.D.	1000
	金属 METAL	参见备注(4) See Note (4)	阴性 Negative	/	阴性 Negative	/	/	—
多溴联苯之和 Sum of PBBs	—	/	N.D.	/	N.D.	N.D.	1000	
一溴联苯 Bromobiphenyl	5	/	N.D.	/	N.D.	N.D.	—	
二溴联苯 Dibromobiphenyl	5	/	N.D.	/	N.D.	N.D.	—	
三溴联苯 Tribromobiphenyl	5	/	N.D.	/	N.D.	N.D.	—	
四溴联苯 Tetrabromobiphenyl	5	/	N.D.	/	N.D.	N.D.	—	
五溴联苯 Pentabromobiphenyl	5	/	N.D.	/	N.D.	N.D.	—	
六溴联苯 Hexabromobiphenyl	5	/	N.D.	/	N.D.	N.D.	—	
七溴联苯 Heptabromobiphenyl	5	/	N.D.	/	N.D.	N.D.	—	
八溴联苯 Octabromobiphenyl	5	/	N.D.	/	N.D.	N.D.	—	
九溴联苯 Nonabromobiphenyl	5	/	N.D.	/	N.D.	N.D.	—	
十溴联苯 Decabromobiphenyl	5	/	N.D.	/	N.D.	N.D.	—	
多溴二苯醚之和 Sum of PBDEs	—	/	N.D.	/	N.D.	N.D.	1000	
一溴二苯醚 Bromodiphenyl ether	5	/	N.D.	/	N.D.	N.D.	—	
二溴二苯醚 Dibromodiphenyl ether	5	/	N.D.	/	N.D.	N.D.	—	
三溴二苯醚 Tribromodiphenyl ether	5	/	N.D.	/	N.D.	N.D.	—	
四溴二苯醚 Tetrabromodiphenyl ether	5	/	N.D.	/	N.D.	N.D.	—	
五溴二苯醚 Pentabromodiphenyl ether	5	/	N.D.	/	N.D.	N.D.	—	
六溴二苯醚 Hexabromodiphenyl ether	5	/	N.D.	/	N.D.	N.D.	—	
七溴二苯醚 Heptabromodiphenyl ether	5	/	N.D.	/	N.D.	N.D.	—	
八溴二苯醚 Octabromodiphenyl ether	5	/	N.D.	/	N.D.	N.D.	—	
九溴二苯醚 Nonabromodiphenyl ether	5	/	N.D.	/	N.D.	N.D.	—	
十溴二苯醚 Decabromodiphenyl ether	5	/	N.D.	/	N.D.	N.D.	—	

本页以下空白 The page below is blank





测试报告 Test Report NO.: BRCYWTJB4030207D3a

测试结果 Test Result (单位 Unit: mg/kg)

测试项目 Test Item	方法检出限 MDL	样品编号和测试结果 Sample Number&Test Result					RoHS 限量 RoHS Limit	
		4-12	5-1-1 同 refer to 1-1-1	5-1-2 同 refer to 1-1-2	5-2 同 refer to 1-2	5-3 同 refer to 1-3		
铅 Lead (Pb)	2	10	N.D.	N.D.	N.D.	N.D.	1000	
镉 Cadmium (Cd)	2	N.D.	N.D.	N.D.	N.D.	N.D.	100	
汞 Mercury (Hg)	2	N.D.	N.D.	N.D.	N.D.	N.D.	1000	
六价铬 Hexavalent Chromium (Cr ⁶⁺)	非金属 NON-META	8	N.D.	/	N.D.	N.D.	N.D.	1000
	金属 METAL	参见备注(4) See Note (4)	/	阴性 Negative	/	/	/	—
多溴联苯之和 Sum of PBBs	—	N.D.	/	N.D.	N.D.	N.D.	1000	
一溴联苯 Bromobiphenyl	5	N.D.	/	N.D.	N.D.	N.D.	—	
二溴联苯 Dibromobiphenyl	5	N.D.	/	N.D.	N.D.	N.D.	—	
三溴联苯 Tribromobiphenyl	5	N.D.	/	N.D.	N.D.	N.D.	—	
四溴联苯 Tetrabromobiphenyl	5	N.D.	/	N.D.	N.D.	N.D.	—	
五溴联苯 Pentabromobiphenyl	5	N.D.	/	N.D.	N.D.	N.D.	—	
六溴联苯 Hexabromobiphenyl	5	N.D.	/	N.D.	N.D.	N.D.	—	
七溴联苯 Heptabromobiphenyl	5	N.D.	/	N.D.	N.D.	N.D.	—	
八溴联苯 Octabromobiphenyl	5	N.D.	/	N.D.	N.D.	N.D.	—	
九溴联苯 Nonabromobiphenyl	5	N.D.	/	N.D.	N.D.	N.D.	—	
十溴联苯 Decabromobiphenyl	5	N.D.	/	N.D.	N.D.	N.D.	—	
多溴二苯醚之和 Sum of PBDEs	—	N.D.	/	N.D.	N.D.	N.D.	1000	
一溴二苯醚 Bromodiphenyl ether	5	N.D.	/	N.D.	N.D.	N.D.	—	
二溴二苯醚 Dibromodiphenyl ether	5	N.D.	/	N.D.	N.D.	N.D.	—	
三溴二苯醚 Tribromodiphenyl ether	5	N.D.	/	N.D.	N.D.	N.D.	—	
四溴二苯醚 Tetrabromodiphenyl ether	5	N.D.	/	N.D.	N.D.	N.D.	—	
五溴二苯醚 Pentabromodiphenyl ether	5	N.D.	/	N.D.	N.D.	N.D.	—	
六溴二苯醚 Hexabromodiphenyl ether	5	N.D.	/	N.D.	N.D.	N.D.	—	
七溴二苯醚 Heptabromodiphenyl ether	5	N.D.	/	N.D.	N.D.	N.D.	—	
八溴二苯醚 Octabromodiphenyl ether	5	N.D.	/	N.D.	N.D.	N.D.	—	
九溴二苯醚 Nonabromodiphenyl ether	5	N.D.	/	N.D.	N.D.	N.D.	—	
十溴二苯醚 Decabromodiphenyl ether	5	N.D.	/	N.D.	N.D.	N.D.	—	

—————本页以下空白 The page below is blank—————





测试报告 Test Report NO.: BRCYWTJB4030207D3a

测试结果 Test Result (单位 Unit: mg/kg)

测试项目 Test Item	方法检出限 MDL	样品编号和测试结果 Sample Number&Test Result					RoHS 限量 RoHS Limit	
		5-4 同 refer to 1-4	5-5 同 refer to 1-9	5-6 同 refer to 1-10	5-7	5-8		
铅 Lead (Pb)	2	N.D.	N.D.	N.D.	N.D.	N.D.	1000	
镉 Cadmium (Cd)	2	N.D.	N.D.	N.D.	N.D.	N.D.	100	
汞 Mercury (Hg)	2	N.D.	N.D.	N.D.	N.D.	N.D.	1000	
六价铬 Hexavalent Chromium (Cr ⁶⁺)	非金属 NON-META	8	N.D.	/	N.D.	N.D.	/	1000
	金属 METAL	参见备注(4) See Note (4)	/	阴性 Negative	/	/	阴性 Negative	—
多溴联苯之和 Sum of PBBs	—	N.D.	/	N.D.	N.D.	/	1000	
一溴联苯 Bromobiphenyl	5	N.D.	/	N.D.	N.D.	/	—	
二溴联苯 Dibromobiphenyl	5	N.D.	/	N.D.	N.D.	/	—	
三溴联苯 Tribromobiphenyl	5	N.D.	/	N.D.	N.D.	/	—	
四溴联苯 Tetrabromobiphenyl	5	N.D.	/	N.D.	N.D.	/	—	
五溴联苯 Pentabromobiphenyl	5	N.D.	/	N.D.	N.D.	/	—	
六溴联苯 Hexabromobiphenyl	5	N.D.	/	N.D.	N.D.	/	—	
七溴联苯 Heptabromobiphenyl	5	N.D.	/	N.D.	N.D.	/	—	
八溴联苯 Octabromobiphenyl	5	N.D.	/	N.D.	N.D.	/	—	
九溴联苯 Nonabromobiphenyl	5	N.D.	/	N.D.	N.D.	/	—	
十溴联苯 Decabromobiphenyl	5	N.D.	/	N.D.	N.D.	/	—	
多溴二苯醚之和 Sum of PBDEs	—	N.D.	/	N.D.	N.D.	/	1000	
一溴二苯醚 Bromodiphenyl ether	5	N.D.	/	N.D.	N.D.	/	—	
二溴二苯醚 Dibromodiphenyl ether	5	N.D.	/	N.D.	N.D.	/	—	
三溴二苯醚 Tribromodiphenyl ether	5	N.D.	/	N.D.	N.D.	/	—	
四溴二苯醚 Tetrabromodiphenyl ether	5	N.D.	/	N.D.	N.D.	/	—	
五溴二苯醚 Pentabromodiphenyl ether	5	N.D.	/	N.D.	N.D.	/	—	
六溴二苯醚 Hexabromodiphenyl ether	5	N.D.	/	N.D.	N.D.	/	—	
七溴二苯醚 Heptabromodiphenyl ether	5	N.D.	/	N.D.	N.D.	/	—	
八溴二苯醚 Octabromodiphenyl ether	5	N.D.	/	N.D.	N.D.	/	—	
九溴二苯醚 Nonabromodiphenyl ether	5	N.D.	/	N.D.	N.D.	/	—	
十溴二苯醚 Decabromodiphenyl ether	5	N.D.	/	N.D.	N.D.	/	—	

—————本页以下空白 The page below is blank—————





测试报告 Test Report NO.: BRCYWTJB4030207D3a

测试结果 Test Result (单位 Unit: mg/kg)

测试项目 Test Item		方法检出限 MDL	样品编号和测试结果 Sample Number&Test Result					RoHS 限量 RoHS Limit
			5-9	5-10	5-11	5-12	5-13	
铅 Lead (Pb)		2	N.D.	N.D.	N.D.	N.D.	N.D.	1000
镉 Cadmium (Cd)		2	N.D.	N.D.	N.D.	N.D.	N.D.	100
汞 Mercury (Hg)		2	N.D.	N.D.	N.D.	N.D.	N.D.	1000
六价铬 Hexavalent Chromium (Cr ⁶⁺)	非金属 NON-META	8	/	N.D.	N.D.	N.D.	/	1000
	金属 METAL	参见备注(4) See Note (4)	阴性 Negative	/	/	/	阴性 Negative	—
多溴联苯之和 Sum of PBBs		—	/	N.D.	N.D.	N.D.	/	1000
一溴联苯 Bromobiphenyl		5	/	N.D.	N.D.	N.D.	/	—
二溴联苯 Dibromobiphenyl		5	/	N.D.	N.D.	N.D.	/	—
三溴联苯 Tribromobiphenyl		5	/	N.D.	N.D.	N.D.	/	—
四溴联苯 Tetrabromobiphenyl		5	/	N.D.	N.D.	N.D.	/	—
五溴联苯 Pentabromobiphenyl		5	/	N.D.	N.D.	N.D.	/	—
六溴联苯 Hexabromobiphenyl		5	/	N.D.	N.D.	N.D.	/	—
七溴联苯 Heptabromobiphenyl		5	/	N.D.	N.D.	N.D.	/	—
八溴联苯 Octabromobiphenyl		5	/	N.D.	N.D.	N.D.	/	—
九溴联苯 Nonabromobiphenyl		5	/	N.D.	N.D.	N.D.	/	—
十溴联苯 Decabromobiphenyl		5	/	N.D.	N.D.	N.D.	/	—
多溴二苯醚之和 Sum of PBDEs		—	/	N.D.	N.D.	N.D.	/	1000
一溴二苯醚 Bromodiphenyl ether		5	/	N.D.	N.D.	N.D.	/	—
二溴二苯醚 Dibromodiphenyl ether		5	/	N.D.	N.D.	N.D.	/	—
三溴二苯醚 Tribromodiphenyl ether		5	/	N.D.	N.D.	N.D.	/	—
四溴二苯醚 Tetrabromodiphenyl ether		5	/	N.D.	N.D.	N.D.	/	—
五溴二苯醚 Pentabromodiphenyl ether		5	/	N.D.	N.D.	N.D.	/	—
六溴二苯醚 Hexabromodiphenyl ether		5	/	N.D.	N.D.	N.D.	/	—
七溴二苯醚 Heptabromodiphenyl ether		5	/	N.D.	N.D.	N.D.	/	—
八溴二苯醚 Octabromodiphenyl ether		5	/	N.D.	N.D.	N.D.	/	—
九溴二苯醚 Nonabromodiphenyl ether		5	/	N.D.	N.D.	N.D.	/	—
十溴二苯醚 Decabromodiphenyl ether		5	/	N.D.	N.D.	N.D.	/	—

—————本页以下空白 The page below is blank—————





测试报告 Test Report NO.: BRCYWTJB4030207D3a

测试结果 Test Result (单位 Unit: mg/kg)

测试项目 Test Item	方法检出限 MDL	样品编号和测试结果 Sample Number&Test Result					RoHS 限量 RoHS Limit	
		5-14	6-1-1 同 refer to 1-1-1	6-1-2 同 refer to 1-1-2	6-2 同 refer to 1-2	6-3 同 refer to 1-3		
铅 Lead (Pb)	2	N.D.	N.D.	N.D.	N.D.	N.D.	1000	
镉 Cadmium (Cd)	2	N.D.	N.D.	N.D.	N.D.	N.D.	100	
汞 Mercury (Hg)	2	N.D.	N.D.	N.D.	N.D.	N.D.	1000	
六价铬 Hexavalent Chromium (Cr ⁶⁺)	非金属 NON-META	8	/	/	N.D.	N.D.	N.D.	1000
	金属 METAL	参见备注(4) See Note (4)	阴性 Negative	阴性 Negative	/	/	/	—
多溴联苯之和 Sum of PBBs	—	/	/	N.D.	N.D.	N.D.	1000	
一溴联苯 Bromobiphenyl	5	/	/	N.D.	N.D.	N.D.	—	
二溴联苯 Dibromobiphenyl	5	/	/	N.D.	N.D.	N.D.	—	
三溴联苯 Tribromobiphenyl	5	/	/	N.D.	N.D.	N.D.	—	
四溴联苯 Tetrabromobiphenyl	5	/	/	N.D.	N.D.	N.D.	—	
五溴联苯 Pentabromobiphenyl	5	/	/	N.D.	N.D.	N.D.	—	
六溴联苯 Hexabromobiphenyl	5	/	/	N.D.	N.D.	N.D.	—	
七溴联苯 Heptabromobiphenyl	5	/	/	N.D.	N.D.	N.D.	—	
八溴联苯 Octabromobiphenyl	5	/	/	N.D.	N.D.	N.D.	—	
九溴联苯 Nonabromobiphenyl	5	/	/	N.D.	N.D.	N.D.	—	
十溴联苯 Decabromobiphenyl	5	/	/	N.D.	N.D.	N.D.	—	
多溴二苯醚之和 Sum of PBDEs	—	/	/	N.D.	N.D.	N.D.	1000	
一溴二苯醚 Bromodiphenyl ether	5	/	/	N.D.	N.D.	N.D.	—	
二溴二苯醚 Dibromodiphenyl ether	5	/	/	N.D.	N.D.	N.D.	—	
三溴二苯醚 Tribromodiphenyl ether	5	/	/	N.D.	N.D.	N.D.	—	
四溴二苯醚 Tetrabromodiphenyl ether	5	/	/	N.D.	N.D.	N.D.	—	
五溴二苯醚 Pentabromodiphenyl ether	5	/	/	N.D.	N.D.	N.D.	—	
六溴二苯醚 Hexabromodiphenyl ether	5	/	/	N.D.	N.D.	N.D.	—	
七溴二苯醚 Heptabromodiphenyl ether	5	/	/	N.D.	N.D.	N.D.	—	
八溴二苯醚 Octabromodiphenyl ether	5	/	/	N.D.	N.D.	N.D.	—	
九溴二苯醚 Nonabromodiphenyl ether	5	/	/	N.D.	N.D.	N.D.	—	
十溴二苯醚 Decabromodiphenyl ether	5	/	/	N.D.	N.D.	N.D.	—	

———本页以下空白 The page below is blank———





测试报告 Test Report NO.: BRCYWTJB4030207D3a

测试结果 Test Result (单位 Unit: mg/kg)

测试项目 Test Item	方法检出限 MDL	样品编号和测试结果 Sample Number&Test Result					RoHS 限量 RoHS Limit	
		6-4 同 refer to 1-4	6-5 同 refer to 1-9	6-6 同 refer to 1-10	6-7 同 refer to 3-8	6-8 同 refer to 5-11		
铅 Lead (Pb)	2	N.D.	N.D.	N.D.	N.D.	N.D.	1000	
镉 Cadmium (Cd)	2	N.D.	N.D.	N.D.	N.D.	N.D.	100	
汞 Mercury (Hg)	2	N.D.	N.D.	N.D.	N.D.	N.D.	1000	
六价铬 Hexavalent Chromium (Cr ⁶⁺)	非金属 NON-META	8	N.D.	/	N.D.	N.D.	N.D.	1000
	金属 METAL	参见备注(4) See Note (4)	/	阴性 Negative	/	/	/	—
多溴联苯之和 Sum of PBBs	—	N.D.	/	N.D.	N.D.	N.D.	1000	
一溴联苯 Bromobiphenyl	5	N.D.	/	N.D.	N.D.	N.D.	—	
二溴联苯 Dibromobiphenyl	5	N.D.	/	N.D.	N.D.	N.D.	—	
三溴联苯 Tribromobiphenyl	5	N.D.	/	N.D.	N.D.	N.D.	—	
四溴联苯 Tetrabromobiphenyl	5	N.D.	/	N.D.	N.D.	N.D.	—	
五溴联苯 Pentabromobiphenyl	5	N.D.	/	N.D.	N.D.	N.D.	—	
六溴联苯 Hexabromobiphenyl	5	N.D.	/	N.D.	N.D.	N.D.	—	
七溴联苯 Heptabromobiphenyl	5	N.D.	/	N.D.	N.D.	N.D.	—	
八溴联苯 Octabromobiphenyl	5	N.D.	/	N.D.	N.D.	N.D.	—	
九溴联苯 Nonabromobiphenyl	5	N.D.	/	N.D.	N.D.	N.D.	—	
十溴联苯 Decabromobiphenyl	5	N.D.	/	N.D.	N.D.	N.D.	—	
多溴二苯醚之和 Sum of PBDEs	—	N.D.	/	N.D.	N.D.	N.D.	1000	
一溴二苯醚 Bromodiphenyl ether	5	N.D.	/	N.D.	N.D.	N.D.	—	
二溴二苯醚 Dibromodiphenyl ether	5	N.D.	/	N.D.	N.D.	N.D.	—	
三溴二苯醚 Tribromodiphenyl ether	5	N.D.	/	N.D.	N.D.	N.D.	—	
四溴二苯醚 Tetrabromodiphenyl ether	5	N.D.	/	N.D.	N.D.	N.D.	—	
五溴二苯醚 Pentabromodiphenyl ether	5	N.D.	/	N.D.	N.D.	N.D.	—	
六溴二苯醚 Hexabromodiphenyl ether	5	N.D.	/	N.D.	N.D.	N.D.	—	
七溴二苯醚 Heptabromodiphenyl ether	5	N.D.	/	N.D.	N.D.	N.D.	—	
八溴二苯醚 Octabromodiphenyl ether	5	N.D.	/	N.D.	N.D.	N.D.	—	
九溴二苯醚 Nonabromodiphenyl ether	5	N.D.	/	N.D.	N.D.	N.D.	—	
十溴二苯醚 Decabromodiphenyl ether	5	N.D.	/	N.D.	N.D.	N.D.	—	

———本页以下空白 The page below is blank———





测试报告 Test Report NO.: BRCYWTJB4030207D3a

测试结果 Test Result (单位 Unit: mg/kg)

测试项目 Test Item	方法检出限 MDL	样品编号和测试结果 Sample Number&Test Result					RoHS 限量 RoHS Limit	
		6-9 同 refer to 5-13	6-10 同 refer to 5-14	6-11	6-12	6-13		
铅 Lead (Pb)	2	N.D.	N.D.	N.D.	N.D.	N.D.	1000	
镉 Cadmium (Cd)	2	N.D.	N.D.	N.D.	N.D.	N.D.	100	
汞 Mercury (Hg)	2	N.D.	N.D.	N.D.	N.D.	N.D.	1000	
六价铬 Hexavalent Chromium (Cr ⁶⁺)	非金属 NON-METAL	8	/	/	/	/	N.D.	1000
	金属 METAL	参见备注(4) See Note (4)	阴性 Negative	阴性 Negative	阴性 Negative	阴性 Negative	/	—
多溴联苯之和 Sum of PBBs	—	/	/	/	/	N.D.	1000	
一溴联苯 Bromobiphenyl	5	/	/	/	/	N.D.	—	
二溴联苯 Dibromobiphenyl	5	/	/	/	/	N.D.	—	
三溴联苯 Tribromobiphenyl	5	/	/	/	/	N.D.	—	
四溴联苯 Tetrabromobiphenyl	5	/	/	/	/	N.D.	—	
五溴联苯 Pentabromobiphenyl	5	/	/	/	/	N.D.	—	
六溴联苯 Hexabromobiphenyl	5	/	/	/	/	N.D.	—	
七溴联苯 Heptabromobiphenyl	5	/	/	/	/	N.D.	—	
八溴联苯 Octabromobiphenyl	5	/	/	/	/	N.D.	—	
九溴联苯 Nonabromobiphenyl	5	/	/	/	/	N.D.	—	
十溴联苯 Decabromobiphenyl	5	/	/	/	/	N.D.	—	
多溴二苯醚之和 Sum of PBDEs	—	/	/	/	/	N.D.	1000	
一溴二苯醚 Bromodiphenyl ether	5	/	/	/	/	N.D.	—	
二溴二苯醚 Dibromodiphenyl ether	5	/	/	/	/	N.D.	—	
三溴二苯醚 Tribromodiphenyl ether	5	/	/	/	/	N.D.	—	
四溴二苯醚 Tetrabromodiphenyl ether	5	/	/	/	/	N.D.	—	
五溴二苯醚 Pentabromodiphenyl ether	5	/	/	/	/	N.D.	—	
六溴二苯醚 Hexabromodiphenyl ether	5	/	/	/	/	N.D.	—	
七溴二苯醚 Heptabromodiphenyl ether	5	/	/	/	/	N.D.	—	
八溴二苯醚 Octabromodiphenyl ether	5	/	/	/	/	N.D.	—	
九溴二苯醚 Nonabromodiphenyl ether	5	/	/	/	/	N.D.	—	
十溴二苯醚 Decabromodiphenyl ether	5	/	/	/	/	N.D.	—	

—————本页以下空白 The page below is blank—————





测试报告 Test Report NO.: BRCYWTJB4030207D3a

测试结果 Test Result (单位 Unit: mg/kg)

测试项目 Test Item	方法检出限 MDL	样品编号和测试结果 Sample Number&Test Result						RoHS 限量 RoHS Limit	
		6-14	6-15	6-16	6-17	6-18	6-19		
铅 Lead (Pb)	2	N.D.	N.D.	N.D.	N.D.	N.D.	N.D.	1000	
镉 Cadmium (Cd)	2	N.D.	N.D.	N.D.	N.D.	N.D.	N.D.	100	
汞 Mercury (Hg)	2	N.D.	N.D.	N.D.	N.D.	N.D.	N.D.	1000	
六价铬 Hexavalent Chromium (Cr ⁶⁺)	非金属 NON-META	8	/	N.D.	/	/	N.D.	N.D.	1000
	金属 METAL	参见备注(4) See Note (4)	阴性 Negative	/	阴性 Negative	阴性 Negative	/	/	—
多溴联苯之和 Sum of PBBs	—	/	N.D.	/	/	N.D.	N.D.	1000	
一溴联苯 Bromobiphenyl	5	/	N.D.	/	/	N.D.	N.D.	—	
二溴联苯 Dibromobiphenyl	5	/	N.D.	/	/	N.D.	N.D.	—	
三溴联苯 Tribromobiphenyl	5	/	N.D.	/	/	N.D.	N.D.	—	
四溴联苯 Tetrabromobiphenyl	5	/	N.D.	/	/	N.D.	N.D.	—	
五溴联苯 Pentabromobiphenyl	5	/	N.D.	/	/	N.D.	N.D.	—	
六溴联苯 Hexabromobiphenyl	5	/	N.D.	/	/	N.D.	N.D.	—	
七溴联苯 Heptabromobiphenyl	5	/	N.D.	/	/	N.D.	N.D.	—	
八溴联苯 Octabromobiphenyl	5	/	N.D.	/	/	N.D.	N.D.	—	
九溴联苯 Nonabromobiphenyl	5	/	N.D.	/	/	N.D.	N.D.	—	
十溴联苯 Decabromobiphenyl	5	/	N.D.	/	/	N.D.	N.D.	—	
多溴二苯醚之和 Sum of PBDEs	—	/	N.D.	/	/	N.D.	N.D.	1000	
一溴二苯醚 Bromodiphenyl ether	5	/	N.D.	/	/	N.D.	N.D.	—	
二溴二苯醚 Dibromodiphenyl ether	5	/	N.D.	/	/	N.D.	N.D.	—	
三溴二苯醚 Tribromodiphenyl ether	5	/	N.D.	/	/	N.D.	N.D.	—	
四溴二苯醚 Tetrabromodiphenyl ether	5	/	N.D.	/	/	N.D.	N.D.	—	
五溴二苯醚 Pentabromodiphenyl ether	5	/	N.D.	/	/	N.D.	N.D.	—	
六溴二苯醚 Hexabromodiphenyl ether	5	/	N.D.	/	/	N.D.	N.D.	—	
七溴二苯醚 Heptabromodiphenyl ether	5	/	N.D.	/	/	N.D.	N.D.	—	
八溴二苯醚 Octabromodiphenyl ether	5	/	N.D.	/	/	N.D.	N.D.	—	
九溴二苯醚 Nonabromodiphenyl ether	5	/	N.D.	/	/	N.D.	N.D.	—	
十溴二苯醚 Decabromodiphenyl ether	5	/	N.D.	/	/	N.D.	N.D.	—	

—————本页以下空白 The page below is blank—————





测试报告 Test Report NO.: BRCYWTJB4030207D3a

测试结果 Test Result (单位 Unit: mg/kg)

测试项目 Test Item	CAS 号 CAS Number	方法检出限 MDL	样品编号和测试结果 Sample Number&Test Result					RoHS 限量 RoHS Limit
			1-1-1	1-1-2	1-2	1-3	1-4	
邻苯二甲酸二(2-乙基己基)酯 (DEHP)	117-81-7	30	/	N.D.	N.D.	N.D.	N.D.	1000
邻苯二甲酸二丁酯 (DBP)	84-74-2	30	/	N.D.	N.D.	N.D.	N.D.	1000
邻苯二甲酸苝基丁酯 (BBP)	85-68-7	30	/	N.D.	N.D.	N.D.	N.D.	1000
邻苯二甲酸二异丁酯 (DIBP)	84-69-5	30	/	N.D.	N.D.	N.D.	N.D.	1000

测试项目 Test Item	CAS 号 CAS Number	方法检出限 MDL	样品编号和测试结果 Sample Number&Test Result					RoHS 限量 RoHS Limit
			1-5	1-6	1-7	1-8	1-9	
邻苯二甲酸二(2-乙基己基)酯 (DEHP)	117-81-7	30	N.D.	/	/	N.D.	/	1000
邻苯二甲酸二丁酯 (DBP)	84-74-2	30	N.D.	/	/	N.D.	/	1000
邻苯二甲酸苝基丁酯 (BBP)	85-68-7	30	N.D.	/	/	N.D.	/	1000
邻苯二甲酸二异丁酯 (DIBP)	84-69-5	30	N.D.	/	/	N.D.	/	1000

测试项目 Test Item	CAS 号 CAS Number	方法检出限 MDL	样品编号和测试结果 Sample Number&Test Result					RoHS 限量 RoHS Limit
			1-10	2-1-1 同 refer to 1-1-1	2-1-2 同 refer to 1-1-2	2-2 同 refer to 1-2	2-3 同 refer to 1-3	
邻苯二甲酸二(2-乙基己基)酯 (DEHP)	117-81-7	30	N.D.	/	N.D.	N.D.	N.D.	1000
邻苯二甲酸二丁酯 (DBP)	84-74-2	30	N.D.	/	N.D.	N.D.	N.D.	1000
邻苯二甲酸苝基丁酯 (BBP)	85-68-7	30	N.D.	/	N.D.	N.D.	N.D.	1000
邻苯二甲酸二异丁酯 (DIBP)	84-69-5	30	N.D.	/	N.D.	N.D.	N.D.	1000

测试项目 Test Item	CAS 号 CAS Number	方法检出限 MDL	样品编号和测试结果 Sample Number&Test Result					RoHS 限量 RoHS Limit
			2-4 同 refer to 1-4	2-5 同 refer to 1-5	2-6 同 refer to 1-6	2-7 同 refer to 1-7	2-8 同 refer to 1-8	
邻苯二甲酸二(2-乙基己基)酯 (DEHP)	117-81-7	30	N.D.	N.D.	/	/	N.D.	1000
邻苯二甲酸二丁酯 (DBP)	84-74-2	30	N.D.	N.D.	/	/	N.D.	1000
邻苯二甲酸苝基丁酯 (BBP)	85-68-7	30	N.D.	N.D.	/	/	N.D.	1000
邻苯二甲酸二异丁酯 (DIBP)	84-69-5	30	N.D.	N.D.	/	/	N.D.	1000

—————本页以下空白 The page below is blank—————





测试报告 Test Report NO.: BRCYWTJB4030207D3a

测试结果 Test Result (单位 Unit: mg/kg)

测试项目 Test Item	CAS 号 CAS Number	方法检出限 MDL	样品编号和测试结果 Sample Number&Test Result					RoHS 限量 RoHS Limit
			2-9 同 refer to 1-9	2-10 同 refer to 1-10	2-11	2-12	2-13	
邻苯二甲酸二(2-乙基己基)酯 (DEHP)	117-81-7	30	/	N.D.	N.D.	N.D.	/	1000
邻苯二甲酸二丁酯 (DBP)	84-74-2	30	/	N.D.	N.D.	N.D.	/	1000
邻苯二甲酸苝基丁酯 (BBP)	85-68-7	30	/	N.D.	N.D.	N.D.	/	1000
邻苯二甲酸二异丁酯 (DIBP)	84-69-5	30	/	N.D.	N.D.	N.D.	/	1000

测试项目 Test Item	CAS 号 CAS Number	方法检出限 MDL	样品编号和测试结果 Sample Number&Test Result					RoHS 限量 RoHS Limit
			3-1-1 同 refer to 1-1-1	3-1-2 同 refer to 1-1-2	3-2 同 refer to 1-2	3-3 同 refer to 1-3	3-4 同 refer to 1-4	
邻苯二甲酸二(2-乙基己基)酯 (DEHP)	117-81-7	30	/	N.D.	N.D.	N.D.	N.D.	1000
邻苯二甲酸二丁酯 (DBP)	84-74-2	30	/	N.D.	N.D.	N.D.	N.D.	1000
邻苯二甲酸苝基丁酯 (BBP)	85-68-7	30	/	N.D.	N.D.	N.D.	N.D.	1000
邻苯二甲酸二异丁酯 (DIBP)	84-69-5	30	/	N.D.	N.D.	N.D.	N.D.	1000

测试项目 Test Item	CAS 号 CAS Number	方法检出限 MDL	样品编号和测试结果 Sample Number&Test Result					RoHS 限量 RoHS Limit
			3-5 同 refer to 1-9	3-6 同 refer to 1-10	3-7	3-8	3-9-1	
邻苯二甲酸二(2-乙基己基)酯 (DEHP)	117-81-7	30	/	N.D.	/	N.D.	/	1000
邻苯二甲酸二丁酯 (DBP)	84-74-2	30	/	N.D.	/	N.D.	/	1000
邻苯二甲酸苝基丁酯 (BBP)	85-68-7	30	/	N.D.	/	N.D.	/	1000
邻苯二甲酸二异丁酯 (DIBP)	84-69-5	30	/	N.D.	/	N.D.	/	1000

测试项目 Test Item	CAS 号 CAS Number	方法检出限 MDL	样品编号和测试结果 Sample Number&Test Result						RoHS 限量 RoHS Limit
			3-9-2	3-9-3	3-9-4	3-10	4-1-1 同 refer to 1-1-1	4-1-2 同 refer to 1-1-2	
邻苯二甲酸二(2-乙基己基)酯 (DEHP)	117-81-7	30	/	N.D.	N.D.	/	/	N.D.	1000
邻苯二甲酸二丁酯 (DBP)	84-74-2	30	/	N.D.	N.D.	/	/	N.D.	1000
邻苯二甲酸苝基丁酯 (BBP)	85-68-7	30	/	N.D.	N.D.	/	/	N.D.	1000
邻苯二甲酸二异丁酯 (DIBP)	84-69-5	30	/	N.D.	N.D.	/	/	N.D.	1000

—————本页以下空白 The page below is blank—————





测试报告 Test Report NO.: BRCYWTJB4030207D3a

测试结果 Test Result (单位 Unit: mg/kg)

测试项目 Test Item	CAS 号 CAS Number	方法检出限 MDL	样品编号和测试结果 Sample Number&Test Result					RoHS 限量 RoHS Limit
			4-2 同 refer to 1-2	4-3 同 refer to 1-3	4-4 同 refer to 1-4	4-5 同 refer to 1-5	4-6 同 refer to 1-6	
邻苯二甲酸二(2-乙基己基)酯 (DEHP)	117-81-7	30	N.D.	N.D.	N.D.	N.D.	/	1000
邻苯二甲酸二丁酯 (DBP)	84-74-2	30	N.D.	N.D.	N.D.	N.D.	/	1000
邻苯二甲酸苝基丁酯 (BBP)	85-68-7	30	N.D.	N.D.	N.D.	N.D.	/	1000
邻苯二甲酸二异丁酯 (DIBP)	84-69-5	30	N.D.	N.D.	N.D.	N.D.	/	1000

测试项目 Test Item	CAS 号 CAS Number	方法检出限 MDL	样品编号和测试结果 Sample Number&Test Result					RoHS 限量 RoHS Limit
			4-7 同 refer to 1-7	4-8 同 refer to 1-8	4-9 同 refer to 1-9	4-10 同 refer to 1-10	4-11	
邻苯二甲酸二(2-乙基己基)酯 (DEHP)	117-81-7	30	/	N.D.	/	N.D.	N.D.	1000
邻苯二甲酸二丁酯 (DBP)	84-74-2	30	/	N.D.	/	N.D.	N.D.	1000
邻苯二甲酸苝基丁酯 (BBP)	85-68-7	30	/	N.D.	/	N.D.	N.D.	1000
邻苯二甲酸二异丁酯 (DIBP)	84-69-5	30	/	N.D.	/	N.D.	N.D.	1000

测试项目 Test Item	CAS 号 CAS Number	方法检出限 MDL	样品编号和测试结果 Sample Number&Test Result					RoHS 限量 RoHS Limit
			4-12	5-1-1 同 refer to 1-1-1	5-1-2 同 refer to 1-1-2	5-2 同 refer to 1-2	5-3 同 refer to 1-3	
邻苯二甲酸二(2-乙基己基)酯 (DEHP)	117-81-7	30	N.D.	/	N.D.	N.D.	N.D.	1000
邻苯二甲酸二丁酯 (DBP)	84-74-2	30	N.D.	/	N.D.	N.D.	N.D.	1000
邻苯二甲酸苝基丁酯 (BBP)	85-68-7	30	N.D.	/	N.D.	N.D.	N.D.	1000
邻苯二甲酸二异丁酯 (DIBP)	84-69-5	30	N.D.	/	N.D.	N.D.	N.D.	1000

测试项目 Test Item	CAS 号 CAS Number	方法检出限 MDL	样品编号和测试结果 Sample Number&Test Result					RoHS 限量 RoHS Limit
			5-4 同 refer to 1-4	5-5 同 refer to 1-9	5-6 同 refer to 1-10	5-7	5-8	
邻苯二甲酸二(2-乙基己基)酯 (DEHP)	117-81-7	30	N.D.	/	N.D.	N.D.	/	1000
邻苯二甲酸二丁酯 (DBP)	84-74-2	30	N.D.	/	N.D.	N.D.	/	1000
邻苯二甲酸苝基丁酯 (BBP)	85-68-7	30	N.D.	/	N.D.	N.D.	/	1000
邻苯二甲酸二异丁酯 (DIBP)	84-69-5	30	N.D.	/	N.D.	N.D.	/	1000

———本页以下空白 The page below is blank———





测试报告 Test Report NO.: BRCYWTJB4030207D3a

测试结果 Test Result (单位 Unit: mg/kg)

测试项目 Test Item	CAS 号 CAS Number	方法检出限 MDL	样品编号和测试结果 Sample Number&Test Result					RoHS 限量 RoHS Limit
			5-9	5-10	5-11	5-12	5-13	
邻苯二甲酸二(2-乙基己基)酯 (DEHP)	117-81-7	30	/	N.D.	N.D.	N.D.	/	1000
邻苯二甲酸二丁酯 (DBP)	84-74-2	30	/	N.D.	N.D.	N.D.	/	1000
邻苯二甲酸苝基丁酯 (BBP)	85-68-7	30	/	N.D.	N.D.	N.D.	/	1000
邻苯二甲酸二异丁酯 (DIBP)	84-69-5	30	/	N.D.	N.D.	N.D.	/	1000

测试项目 Test Item	CAS 号 CAS Number	方法检出限 MDL	样品编号和测试结果 Sample Number&Test Result					RoHS 限量 RoHS Limit
			5-14	6-1-1 同 refer to 1-1-1	6-1-2 同 refer to 1-1-2	6-2 同 refer to 1-2	6-3 同 refer to 1-3	
邻苯二甲酸二(2-乙基己基)酯 (DEHP)	117-81-7	30	/	/	N.D.	N.D.	N.D.	1000
邻苯二甲酸二丁酯 (DBP)	84-74-2	30	/	/	N.D.	N.D.	N.D.	1000
邻苯二甲酸苝基丁酯 (BBP)	85-68-7	30	/	/	N.D.	N.D.	N.D.	1000
邻苯二甲酸二异丁酯 (DIBP)	84-69-5	30	/	/	N.D.	N.D.	N.D.	1000

测试项目 Test Item	CAS 号 CAS Number	方法检出限 MDL	样品编号和测试结果 Sample Number&Test Result					RoHS 限量 RoHS Limit
			6-4 同 refer to 1-4	6-5 同 refer to 1-9	6-6 同 refer to 1-10	6-7 同 refer to 3-8	6-8 同 refer to 5-11	
邻苯二甲酸二(2-乙基己基)酯 (DEHP)	117-81-7	30	N.D.	/	N.D.	N.D.	N.D.	1000
邻苯二甲酸二丁酯 (DBP)	84-74-2	30	N.D.	/	N.D.	N.D.	N.D.	1000
邻苯二甲酸苝基丁酯 (BBP)	85-68-7	30	N.D.	/	N.D.	N.D.	N.D.	1000
邻苯二甲酸二异丁酯 (DIBP)	84-69-5	30	N.D.	/	N.D.	N.D.	N.D.	1000

测试项目 Test Item	CAS 号 CAS Number	方法检出限 MDL	样品编号和测试结果 Sample Number&Test Result					RoHS 限量 RoHS Limit
			6-9 同 refer to 5-13	6-10 同 refer to 5-14	6-11	6-12	6-13	
邻苯二甲酸二(2-乙基己基)酯 (DEHP)	117-81-7	30	/	/	/	/	N.D.	1000
邻苯二甲酸二丁酯 (DBP)	84-74-2	30	/	/	/	/	N.D.	1000
邻苯二甲酸苝基丁酯 (BBP)	85-68-7	30	/	/	/	/	N.D.	1000
邻苯二甲酸二异丁酯 (DIBP)	84-69-5	30	/	/	/	/	N.D.	1000

—————本页以下空白 The page below is blank—————





测试报告 Test Report NO.: BRCYWTJB4030207D3a

第 26 页, 共 44 页 Page 26 of 44

测试结果 Test Result (单位 Unit: mg/kg)

测试项目 Test Item	CAS 号 CAS Number	方法检出限 MDL	样品编号和测试结果 Sample Number&Test Result						RoHS 限量 RoHS Limit
			6-14	6-15	6-16	6-17	6-18	6-19	
邻苯二甲酸二(2-乙基己基)酯 (DEHP)	117-81-7	30	/	N.D.	/	/	N.D.	N.D.	1000
邻苯二甲酸二丁酯 (DBP)	84-74-2	30	/	N.D.	/	/	N.D.	N.D.	1000
邻苯二甲酸苝基丁酯 (BBP)	85-68-7	30	/	N.D.	/	/	N.D.	N.D.	1000
邻苯二甲酸二异丁酯 (DIBP)	84-69-5	30	/	N.D.	/	/	N.D.	N.D.	1000

- 备注 Note:
- (1) mg/kg = ppm
 - (2) “—”= 未规定 Does not stipulate
 - (3) 最大允许极限值引用 RoHS 2011/65/EU 及修订指令(EU)2015/863 附录 II 的要求
The most allowable limit value reference to RoHS Directive 2011/65/EU & (EU)2015/863 Annex II
 - (4) 沸水萃取测试:
Boiling water extraction test:
<0.10 µg/cm² 以阴性表示, 即镀层中不存在六价铬
<0.10 µg/cm² expressed as “negative” results, indicates without hexavalent chromium in the plating
0.10 µg/cm² ~0.13µg/cm² 无法判定镀层中是否存在六价铬, 需进一步确定。
0.10 µg/cm²~0.13 µg/cm² expressed as “not confirmative”, indicates that it can not be confirmative for the presence of hexavalent chromium in the plating, further test is needed.
>0.13 µg/cm² 以阳性表示, 即镀层中存在六价铬。
>0.13 µg/cm² expressed as “positive”, indicates that hexavalent chromium is detected in the plating.
 - (5) 未检出 (<方法检出限) N.D.=Not Detected (<MDL)
 - (6) 根据委托单位声明, 引用数据的样品材质相同, PONY 不负责该信息的真实性, 涉及到引用数据的样品本次未做测试。
According to the statement of the applicant,the sample material of the quoted data is the same, PONY is not responsible for the authenticity of this information, the samples involved in the quoted data are not tested this time.
 - (7) 根据委托单位声明, 引用数据的样品材质相同, PONY 不负责该信息的真实性, 此报告中的测试数据或结果引自于对应样品编号 B4030177D3 的测试数据或结果。
According to the statement of the applicant,the sample material of the quoted data is the same, PONY is not responsible for the authenticity of this information, the test data or results in this report are from the test data or results of the sample No.B4030177D3.
 - (8) 此报告替代编号 BRCYWTJB4030207D3 (2023-11-13 签发) 测试报告, 原编号 BRCYWTJB4030207D3 测试报告作废, 不具有任何法律效力, 以此报告为准。2023-11-30
This test report is to replace the test report No.BRCYWTJB4030207D3 (Issued by 2023-11-13) The No. BRCYWTJB4030207D3 test report is invalid and of no legal effect. All related information should be referred to the new test report. 2023-11-30

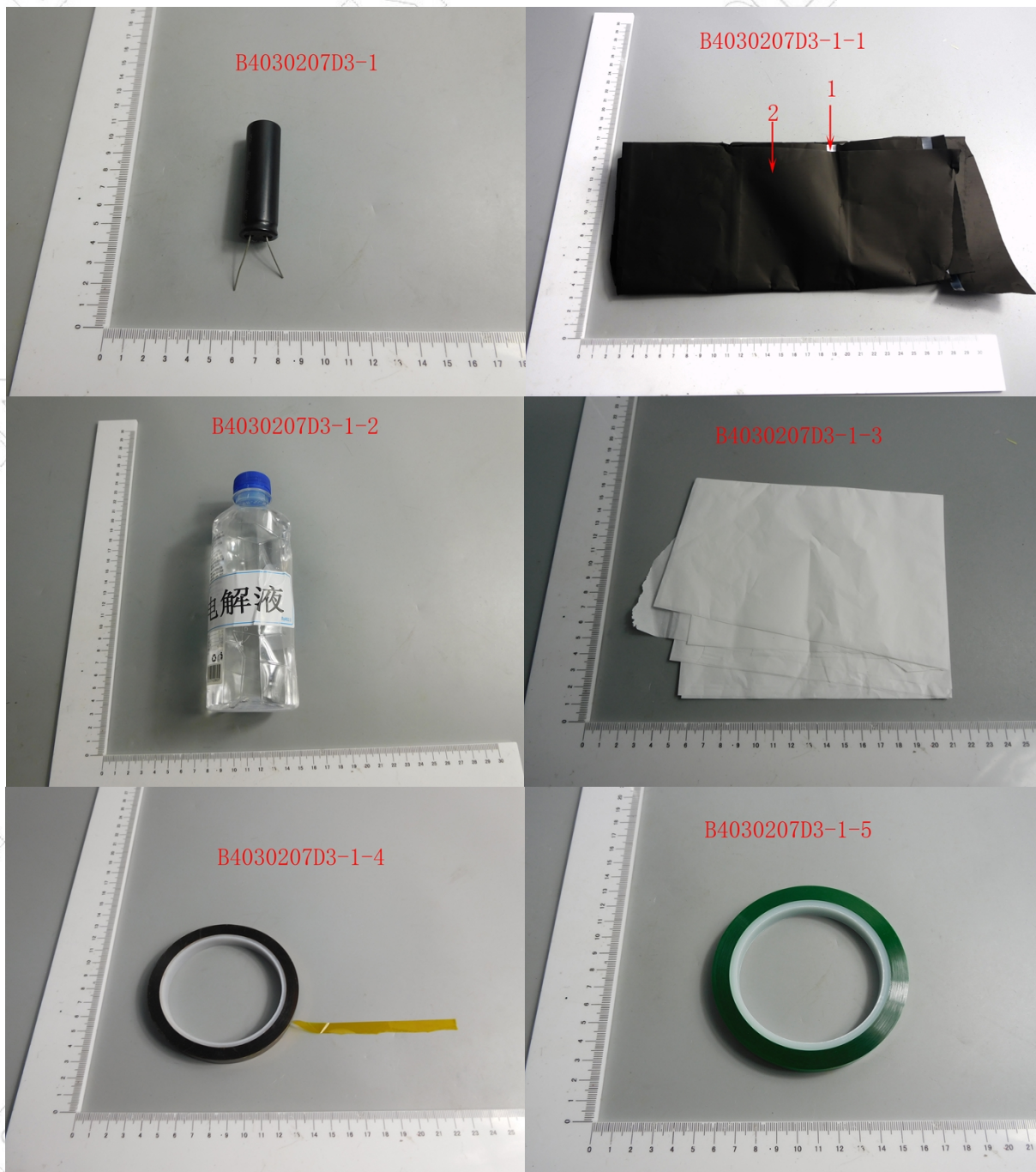
—————本页以下空白 The page below is blank—————





测试报告 Test Report NO.: BRCYWTJB4030207D3a

样品编号和照片 Sample No. & Photo:

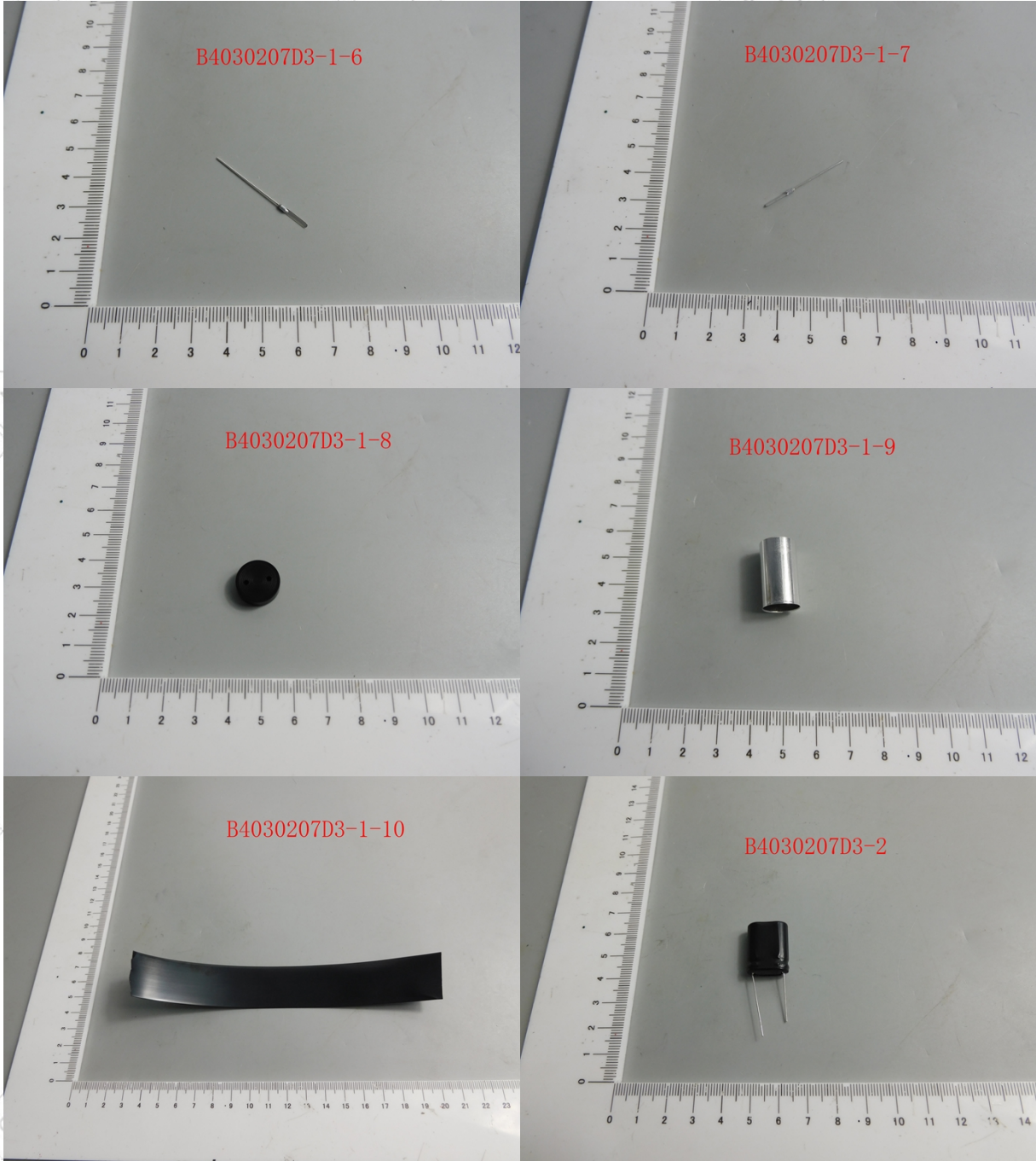


——本页以下空白 The page below is blank——



测试报告 Test Report NO.: BRCYWTJB4030207D3a

样品编号和照片 Sample No. & Photo:

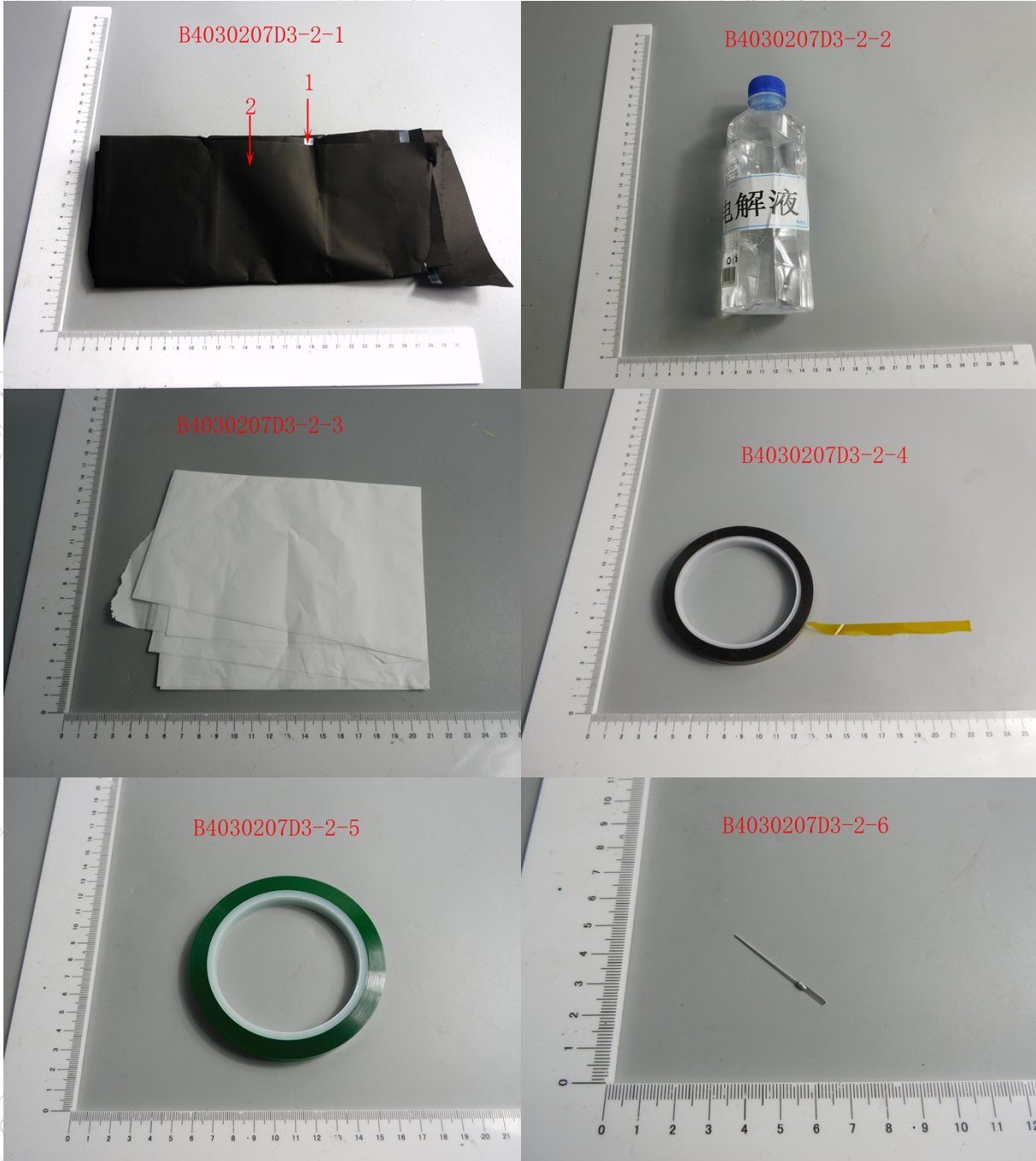


———本页以下空白 The page below is blank———

测试报告 Test Report NO.: BRCYWTJB4030207D3a

第 29 页, 共 44 页 Page 29 of 44

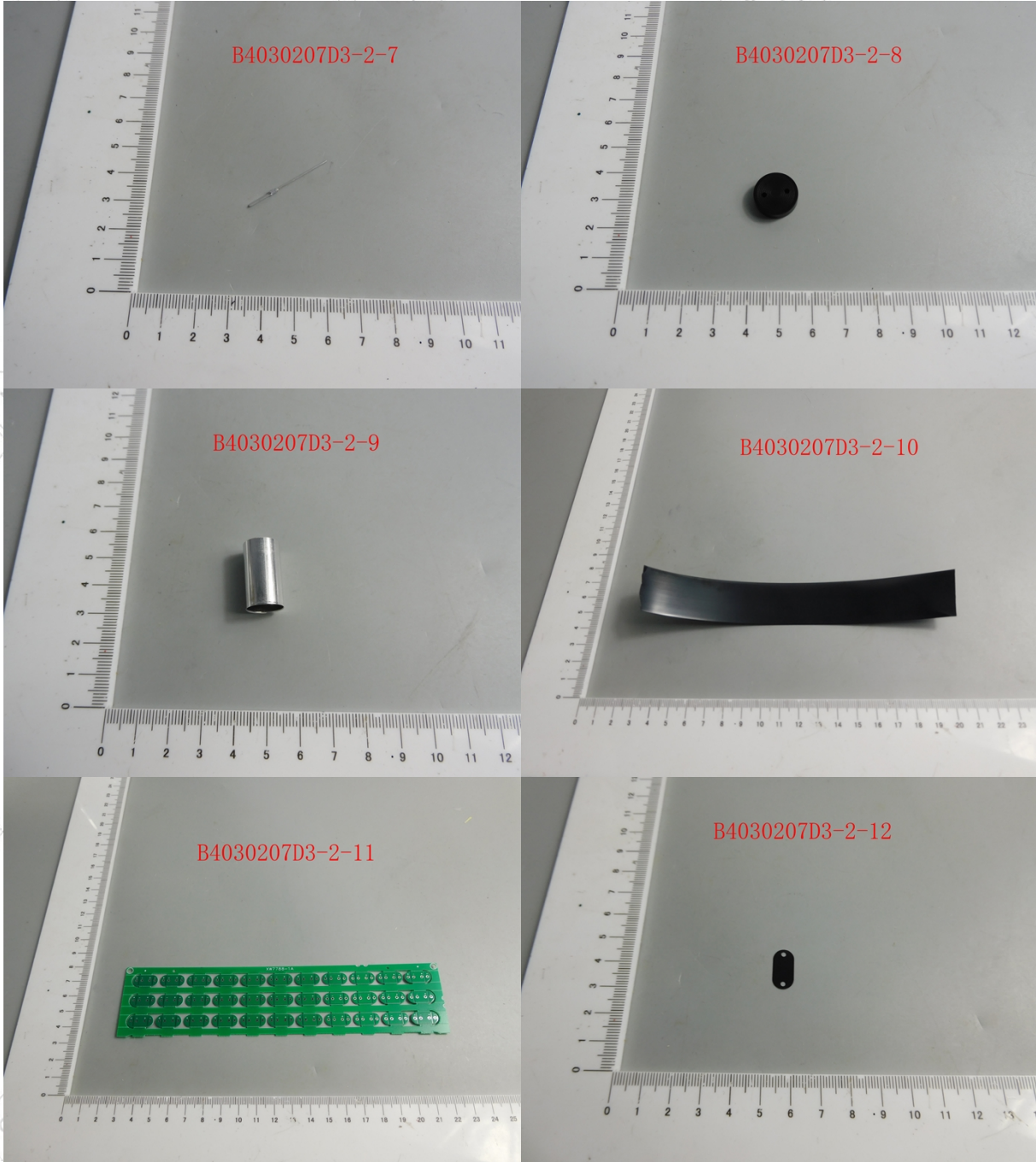
样品编号和照片 Sample No. & Photo:



——本页以下空白 The page below is blank——

测试报告 Test Report NO.: BRCYWTJB4030207D3a

样品编号和照片 Sample No. & Photo:

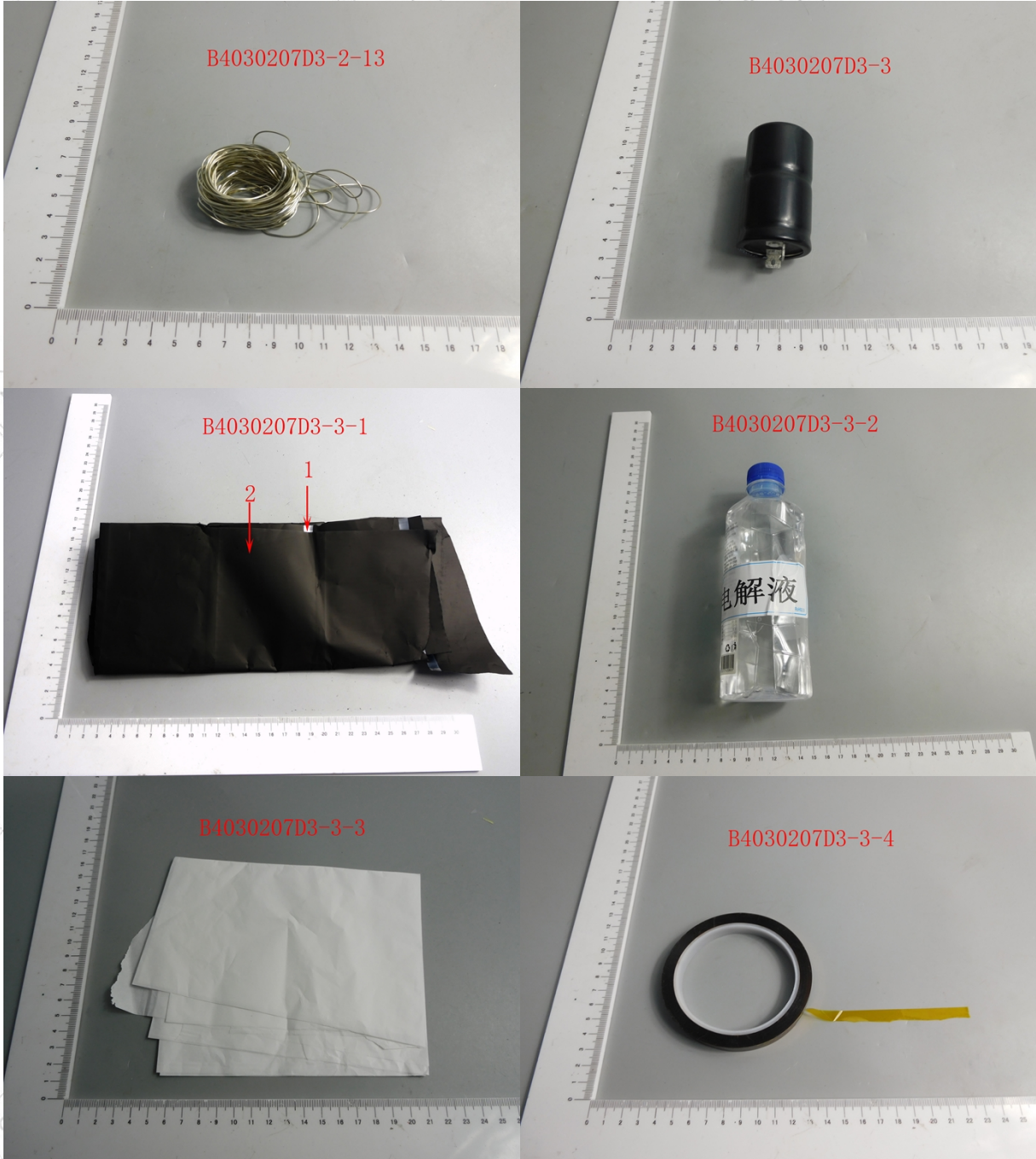


——本页以下空白 The page below is blank——

测试报告 Test Report NO.: BRCYWTJB4030207D3a

第 31 页, 共 44 页 Page 31 of 44

样品编号和照片 Sample No. & Photo:

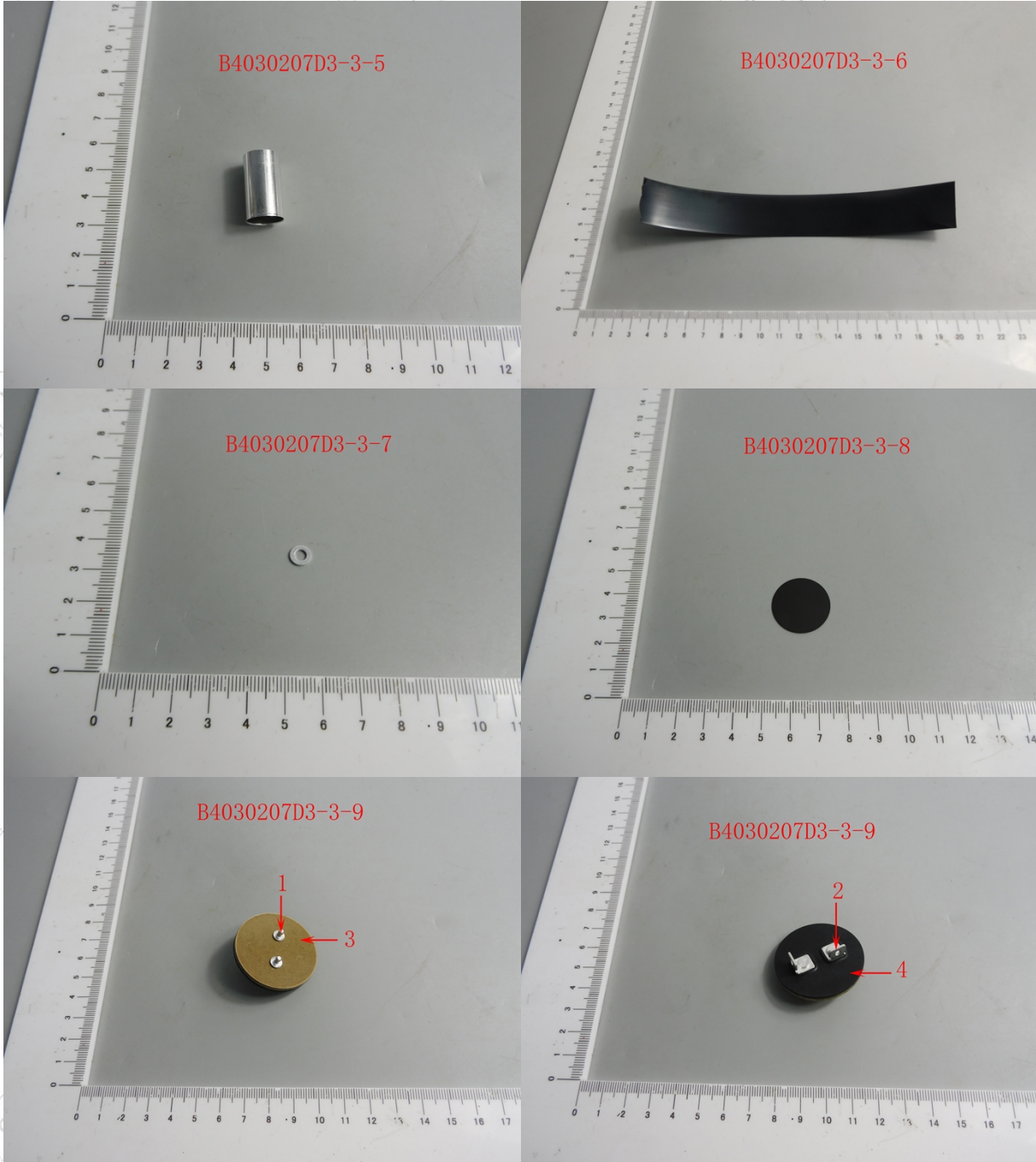


——本页以下空白 The page below is blank——



测试报告 Test Report NO.: BRCYWTJB4030207D3a

样品编号和照片 Sample No. & Photo:



——本页以下空白 The page below is blank——

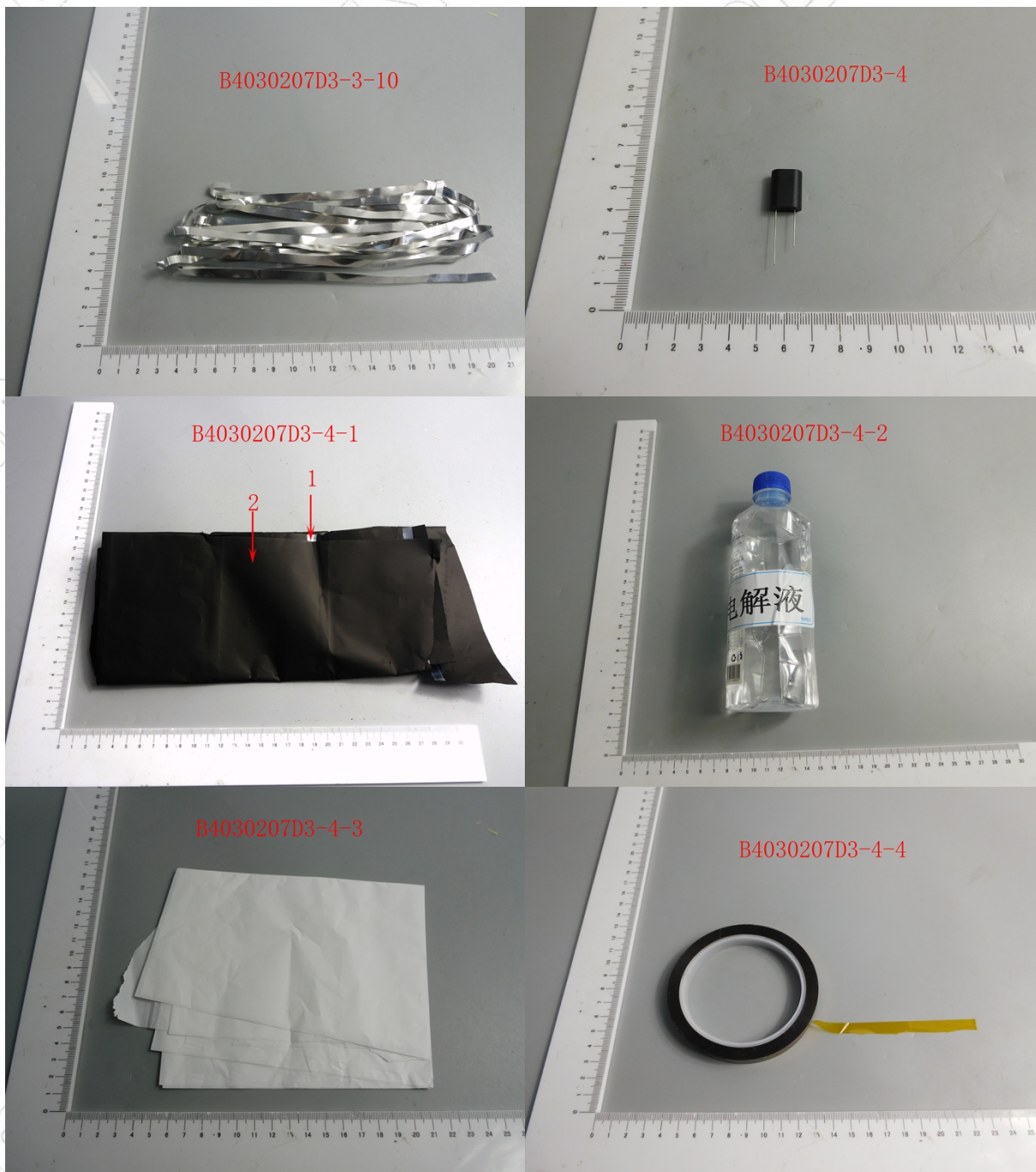




测试报告 Test Report NO.: BRCYWTJB4030207D3a

第 33 页, 共 44 页 Page 33 of 44

样品编号和照片 Sample No. & Photo:



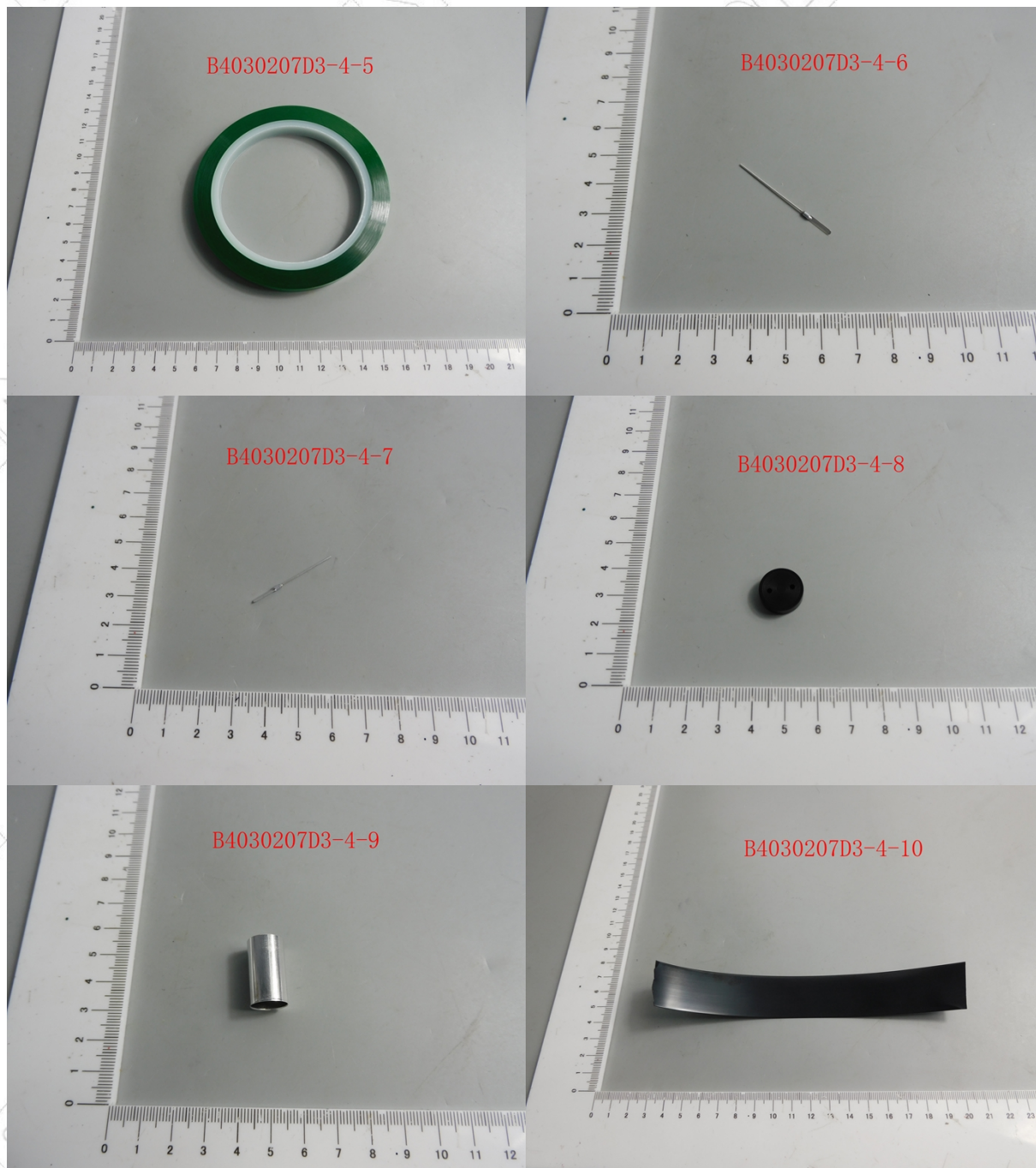
——本页以下空白 The page below is blank——





测试报告 Test Report NO.: BRCYWTJB4030207D3a

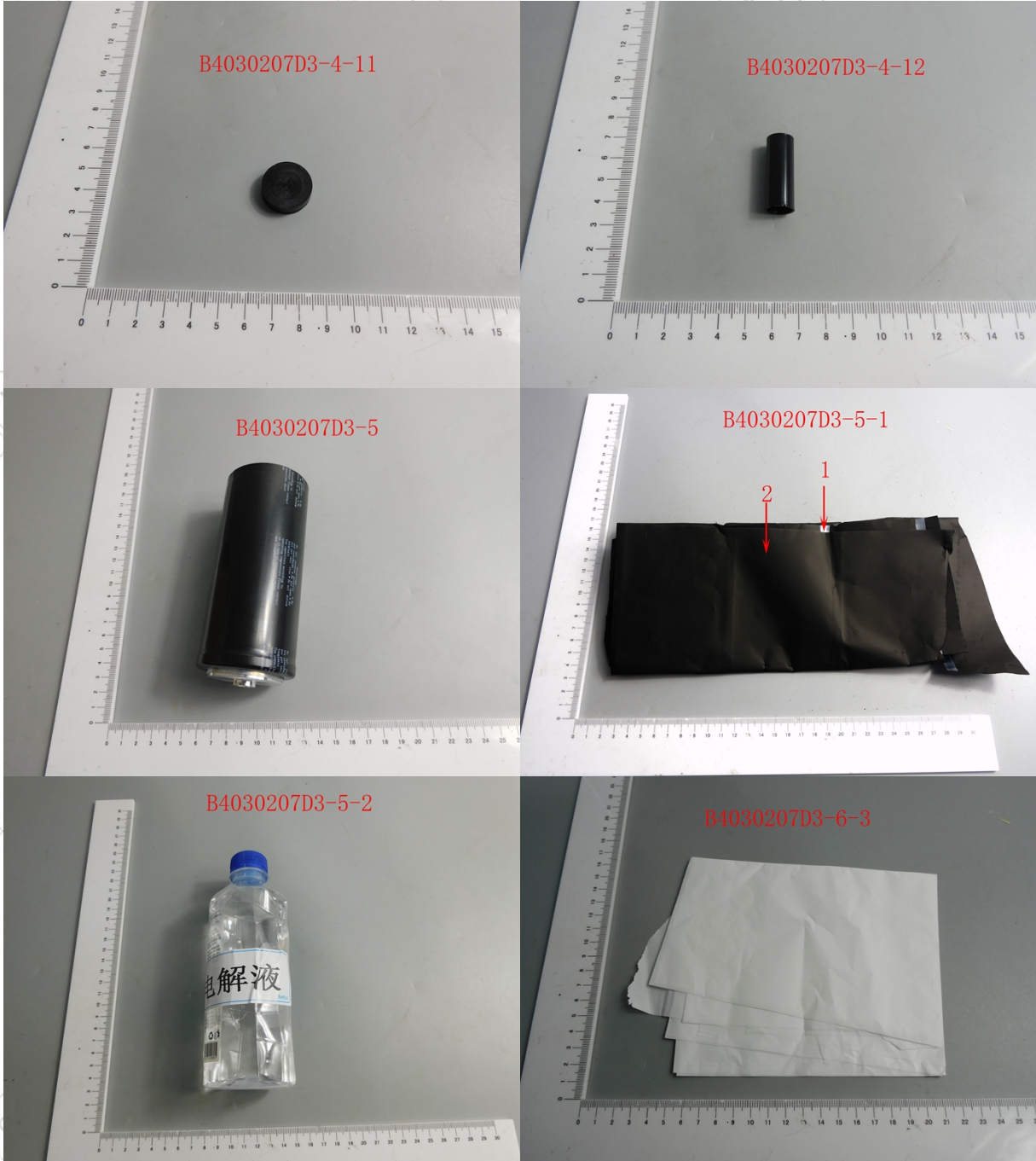
样品编号和照片 Sample No. & Photo:



——本页以下空白 The page below is blank——



样品编号和照片 Sample No. & Photo:

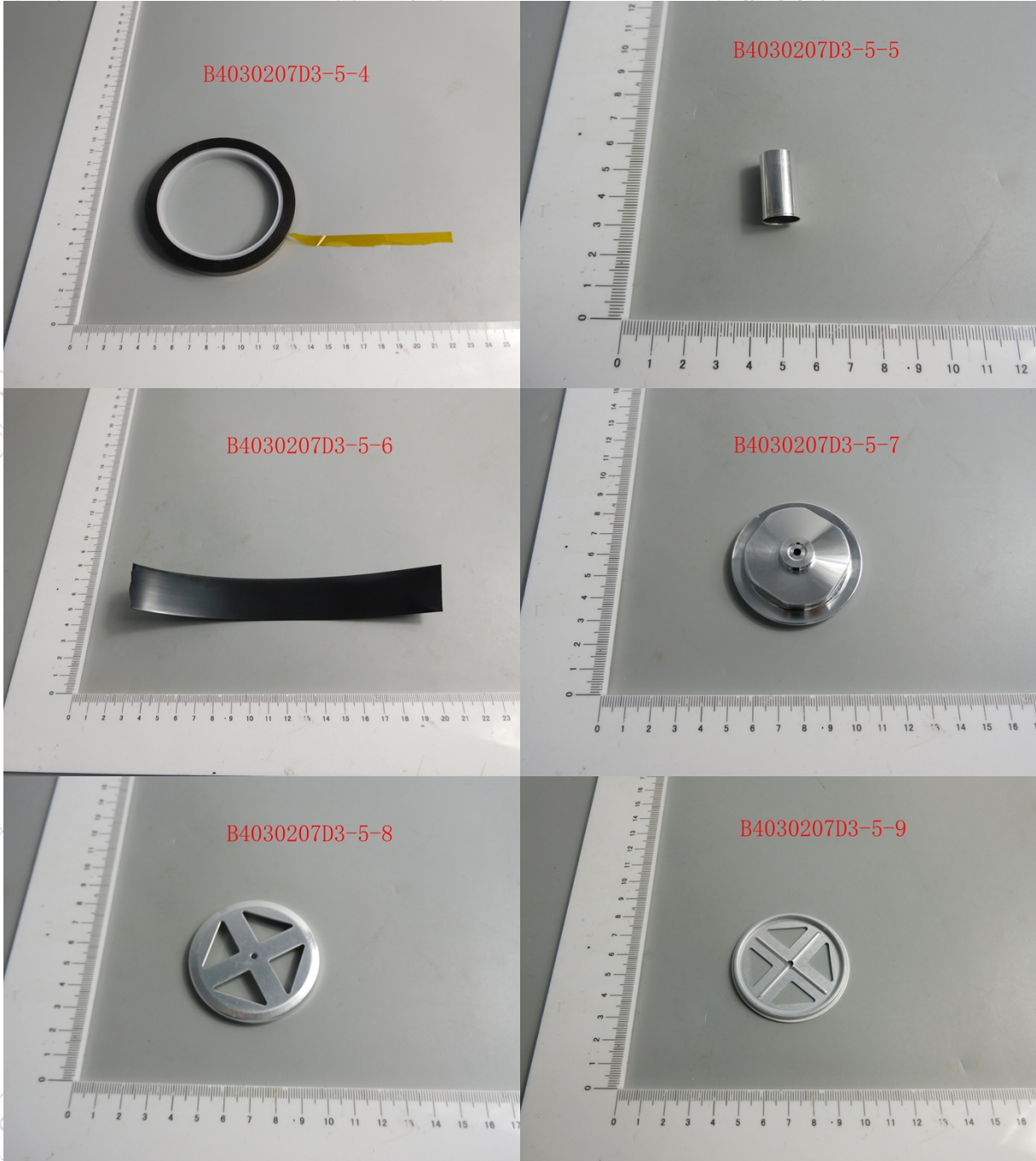


——本页以下空白 The page below is blank——



测试报告 Test Report NO.: BRCYWTJB4030207D3a

样品编号和照片 Sample No. & Photo:



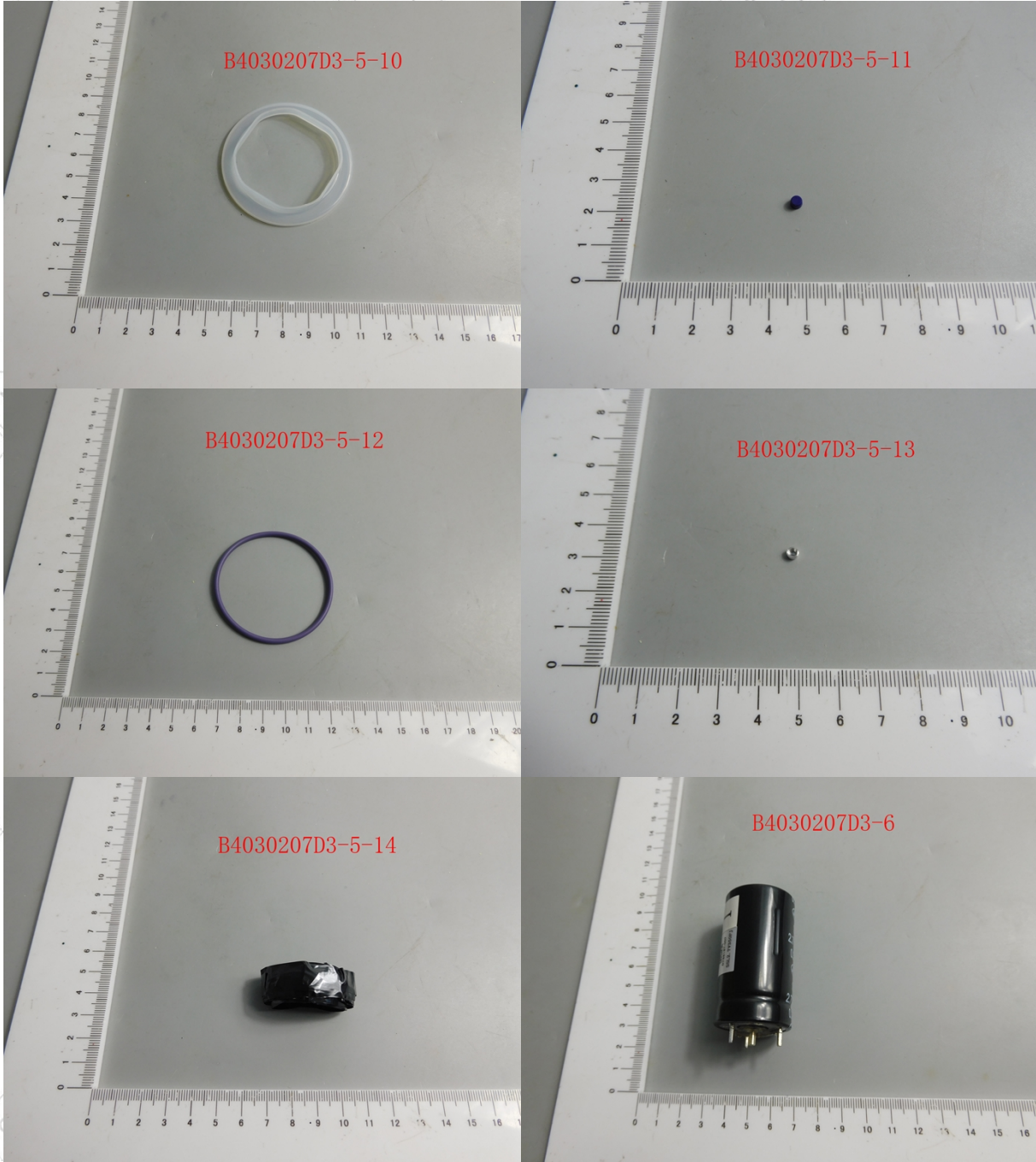
——本页以下空白 The page below is blank——





测试报告 Test Report NO.: BRCYWTJB4030207D3a

样品编号和照片 Sample No. & Photo:



——本页以下空白 The page below is blank——



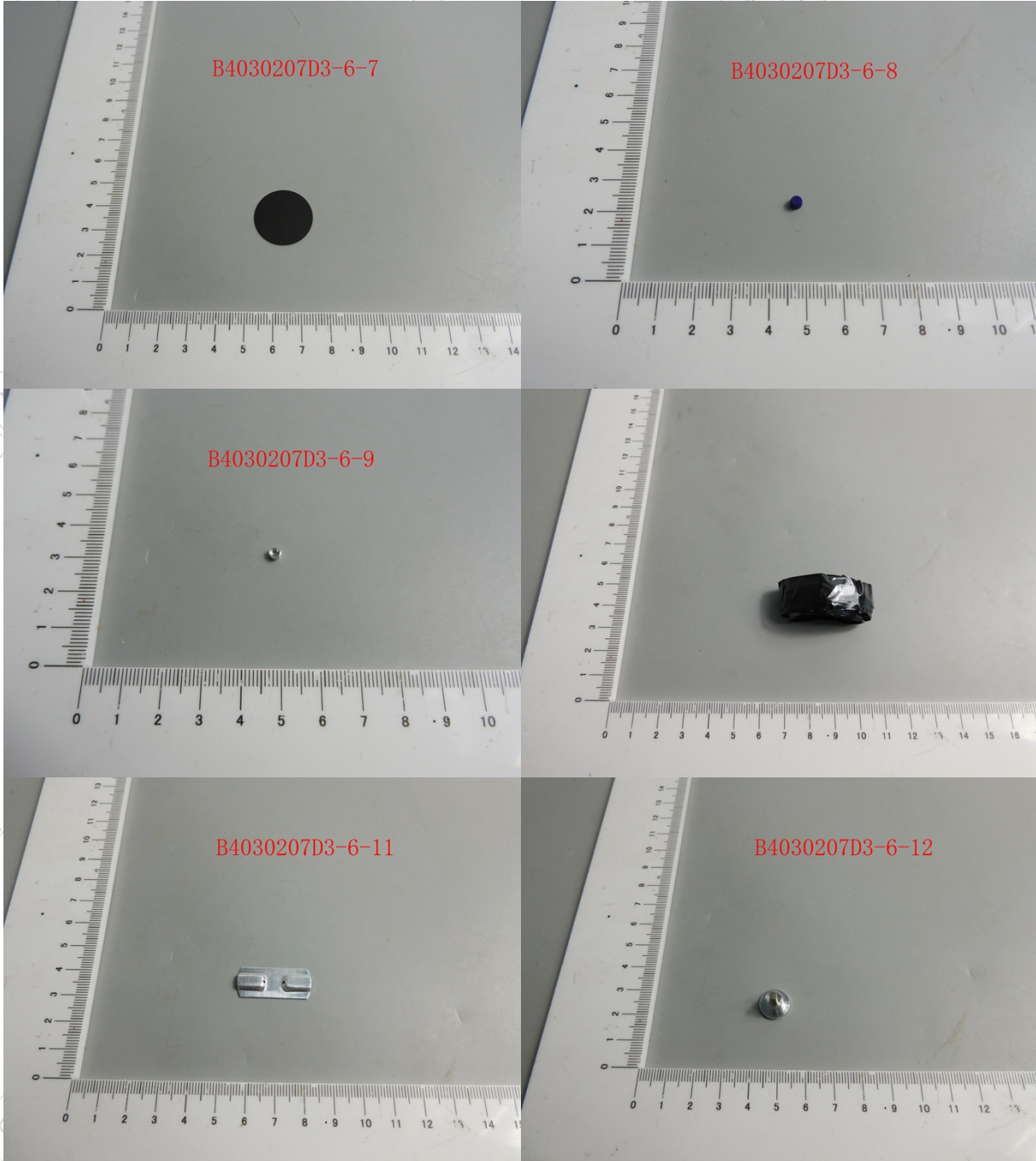
样品编号和照片 Sample No. & Photo:



——本页以下空白 The page below is blank——

测试报告 Test Report NO.: BRCYWTJB4030207D3a

样品编号和照片 Sample No. & Photo:

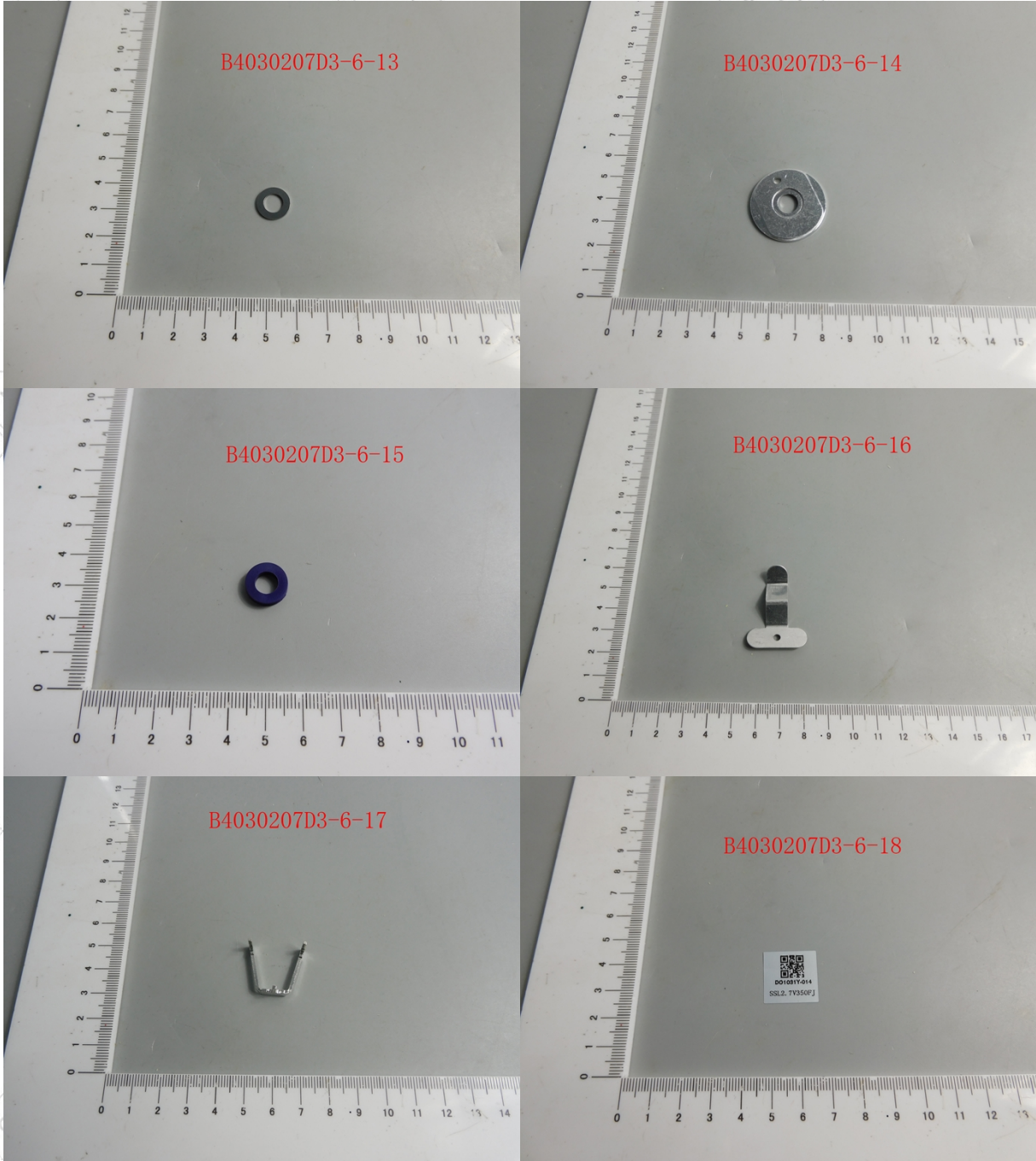


——本页以下空白 The page below is blank——



测试报告 Test Report NO.: BRCYWTJB4030207D3a

样品编号和照片 Sample No. & Photo:



——本页以下空白 The page below is blank——

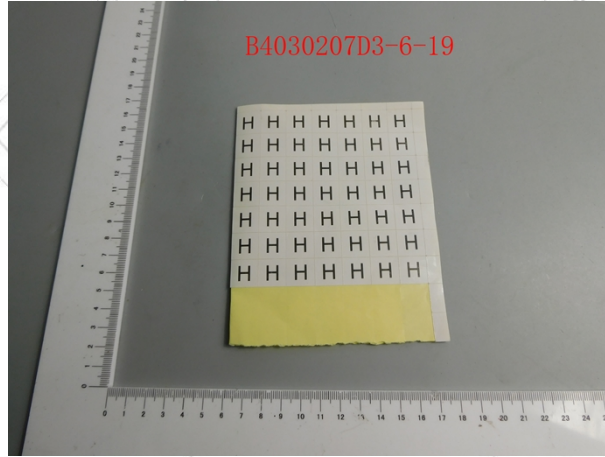




测试报告 **Test Report** NO.: BRCYWTJB4030207D3a

第 41 页, 共 44 页 Page 41 of 44

样品编号和照片 Sample No. & Photo:



仅对报告照片中的样品负责 Pony authenticate the photo on original report only

——本页以下空白 The page below is blank——

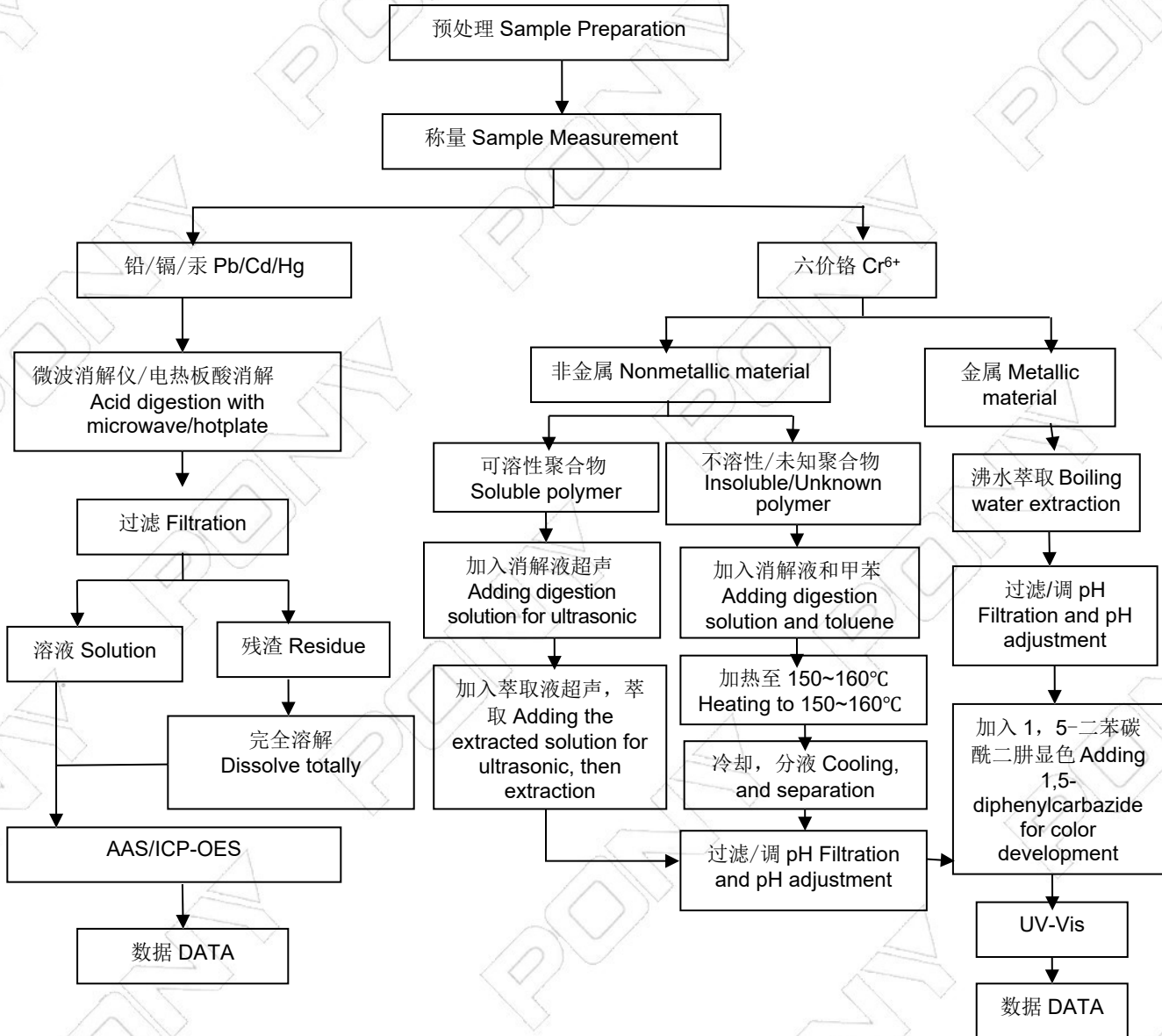




测试流程图 Measurement Flow-chart

样品按照下述流程被完全消解 (六价铬除外)。

These Samples Were Dissolved Totally By Pre-conditioning Method According To Below Flow Chart.
(Cr⁶⁺ Test Method Excluded)

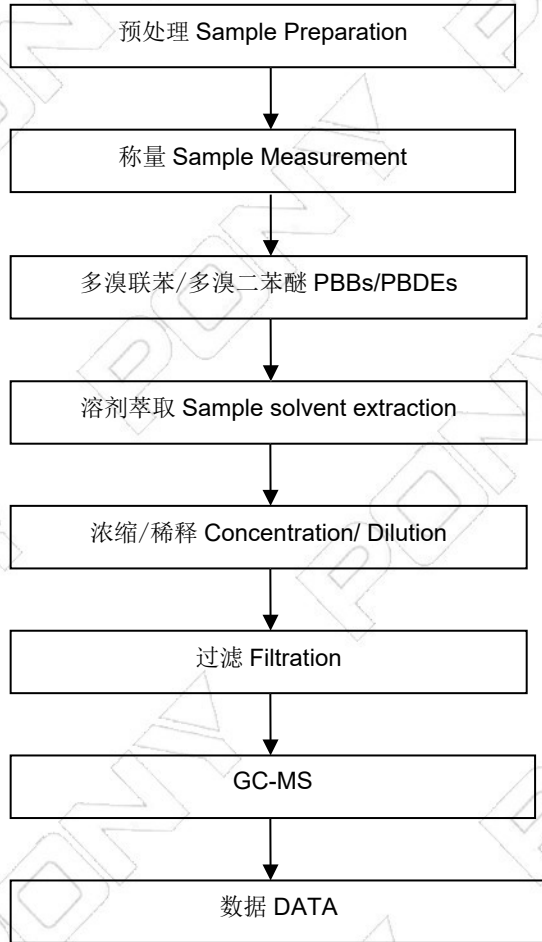


——本页以下空白 The page below is blank——





测试流程图 Measurement Flow-chart

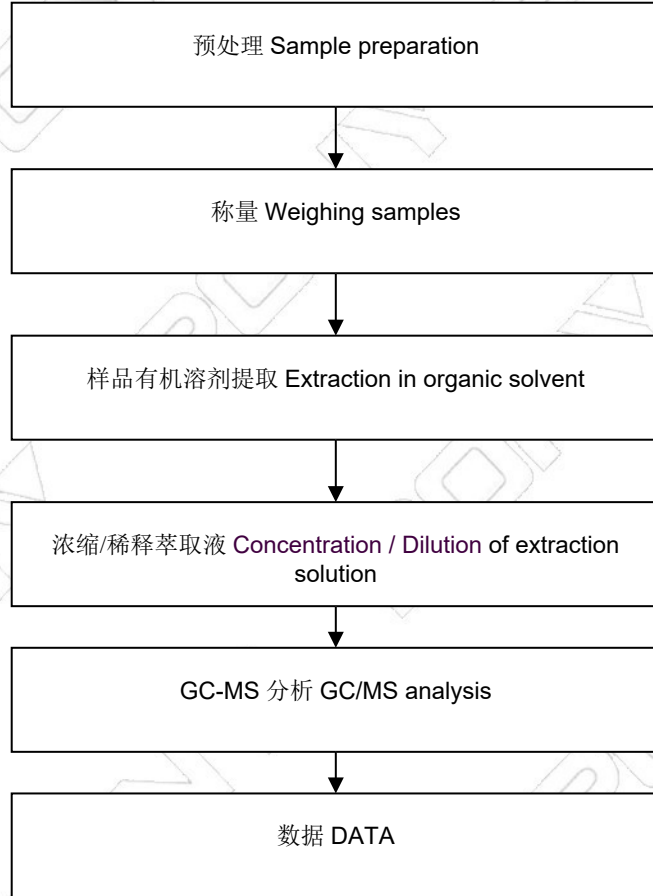


本页以下空白 The page below is blank





邻苯二甲酸酯类测试流程 Phthalate Flow Chart



——报告结束 End of Report——

